



# WILD BEES

## OF NEW HAMPSHIRE

### YELLOW MASKED BEE

*Hylaeus*



© STEVENANZ.COM

**Description:** 2-6mm, wasp-like, black, small and narrow with few hairs. 12 species in NH. Carries pollen it collects internally.

**Nesting Habitat:** Dead twigs or plant stems.

**Social Behavior:** Solitary.

**Flowers:** Generalist.

### MASON BEE

*Osmia*



COMPOSITE IMAGE

**Description:** 5-7mm, stubby looking, usually dark metallic blue or green, some brown. 20 species in NH.

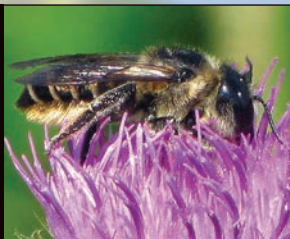
**Nesting Habitat:** Varies – burrows in soil and hollow stems and makes mud compartments.

**Social Behavior:** Solitary.

**Flowers:** Fruit-producing shrubs.

### LEAF-CUTTER BEE

*Megachile*



© ROBERT DURANT

**Description:** 5-21mm, dark colored, with narrow white bands on abdomen. Pollen carried under the abdomen. 17 species in NH. *Hums* as it flies.

**Nesting Habitat:** Hollow twigs and other cavities lined with chewed leaves or petals.

**Social Behavior:** Solitary.

**Flowers:** Sunflowers, coneflowers.

### BUMBLE BEE

*Bombus*



4 SPECIES OF GREATEST CONSERVATION NEED

© JOSEPH FULLER / DREAMS TIME.COM

**Description:** 7-29mm, hairy, black and yellow, or with white, orange or red markings. Broad, pollen-carrying hind legs. Of 18 species historically in NH, only 10 remain.

**Nesting Habitat:** Animal burrows/tussock grass.

**Social Behavior:** Social – one queen and up to 50 bees.

**Flowers:** Generalist.



**SMALL  
CARPENTER BEE**  
*Ceratina*



© © STEVENANZ.COM

**Description:** 5-9mm, dark metallic blue to green with white on face. Hairless. Carries pollen internally. 4 species in NH. Makes citrus scent when aggravated.  
**Nesting Habitat:** Dead pithy stems.  
**Social Behavior:** Solitary or social.  
**Flowers:** Generalist.

**LARGE  
CARPENTER BEE**  
*Xylocopa virginica*



© BOB MCLEAN II / DREAMSTIME.COM

**Description:** 13-24mm, similar to bumblebees, with few hairs on abdomen. 1 species in NH. Chews round ½-inch holes in wood.  
**Nesting Habitat:** Burrows in hardwoods/lumber.  
**Social Behavior:** Mostly solitary.  
**Flowers:** Generalist – especially open-faced flowers.

**SWEAT BEE**  
*Agapostemon*



© © STEVENANZ.COM

**Description:** 7-13mm, bright metallic green. 4 species in NH. Attracted to salt in sweat.  
**Nesting Habitat:** Deep burrows in slopes.  
**Social Behavior:** Most solitary; some communal with up to 24 females sharing nest, but raising own brood.  
**Flowers:** Generalist.

**CUCKOO BEE**  
*Nomada*



© TOM MURRAY/CC-BY-ND-NC1.0-BUGGUIDE.NET

**Description:** 2-7mm, black or brown with red, orange, or yellow, wasp-like with few hairs. 33 species in NH.  
**Nesting Habitat:** Lay eggs in the nests of other species.  
**Social Behavior:** Solitary.  
**Flowers:** Generalist.

**EUROPEAN HONEY BEE**  
*Apis mellifera*  
**INTRODUCED**



© DAVE MASSEY / DREAMSTIME.COM

**Description:** 9-20mm, brown/honey, long hind leg hairs carry pollen. Native to Europe. Raised for honey and crop pollination.  
**Nesting Habitat:** Perennial nests of wax.  
**Social Behavior:** Eusocial, with one fertile queen, thousands of sterile female workers/many fertile males.  
**Flowers:** Generalist.

**WOOL-CARDER BEE**  
*Anthidium*  
**INTRODUCED**



© TOM MURRAY/CC-BY-ND-NC1.0-BUGGUIDE.NET

**Description:** 8-17mm, black with yellow markings, stocky, fast fliers. 2 species introduced to NH.  
**Nesting Habitat:** Build nests with conifer resin, plant hairs and/or mud.  
**Social Behavior:** Mostly solitary.  
**Flowers:** Generalist – some take food from other bees.



Learn more about New Hampshire's wildlife at:  
[wildnh.com/nongame](http://wildnh.com/nongame)

