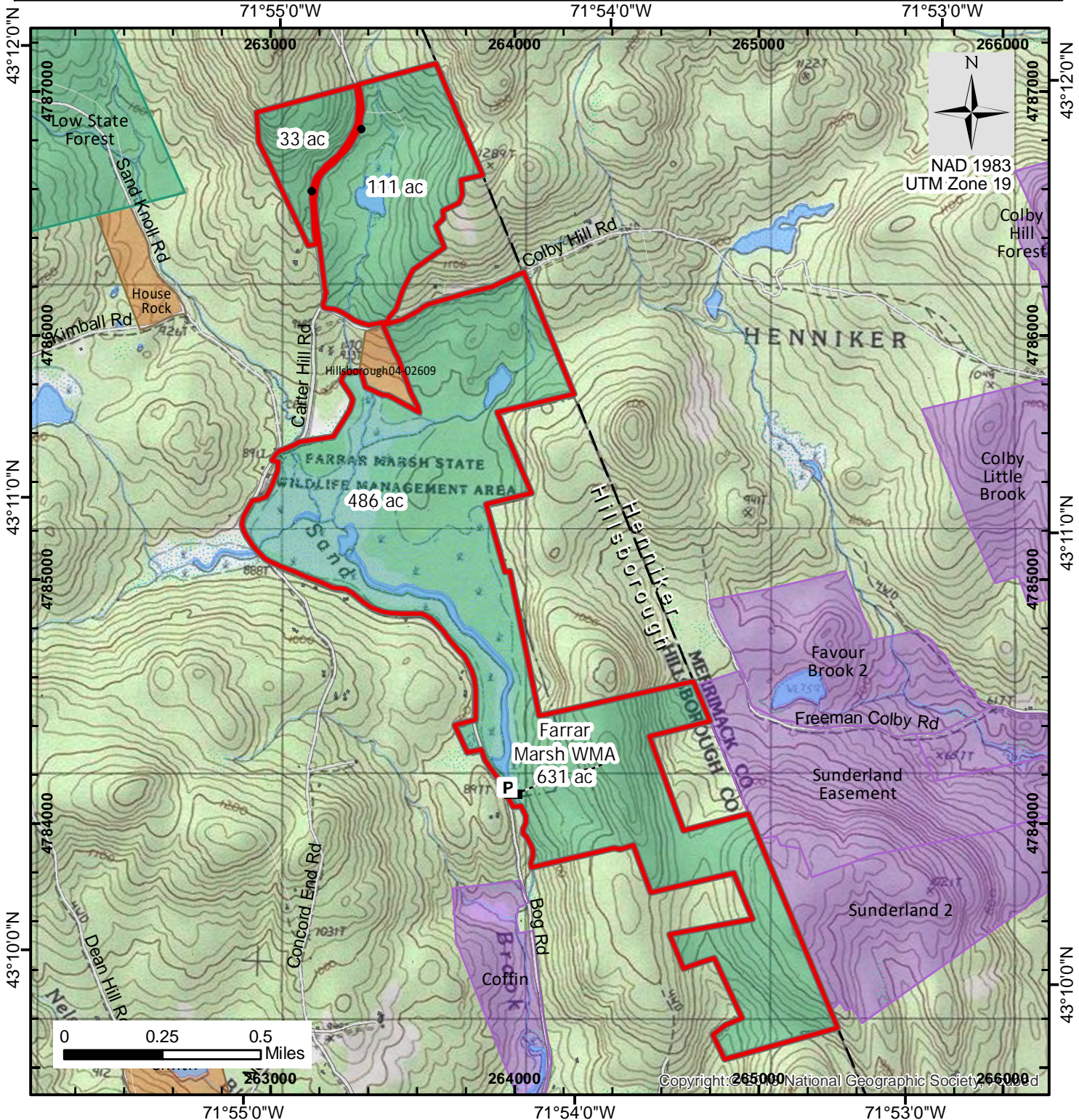




NH Fish and Game Department Wildlife Management Areas

Farrar Marsh WMA (town: Henniker/Hillsborough, wmu: I2)

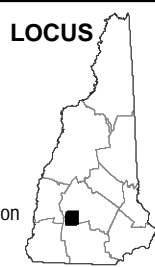
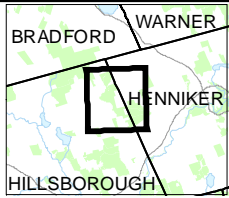


Access and/or activities may be Restricted.
 CAUTION: Trails and roads on WMAs are maintained for management access - not for recreational use. However, you may use them at your own discretion.

Not all conservation land is open to hunting.
 NHFGD highly recommends that each hunter personally contact landowners whenever possible and seek permission to hunt.

Most data presented on this map represent stock data sets from NH GRANIT at UNH. The cooperating agencies make no claim as to the validity or reliability or to any implied uses of these data.

NH Fish and Game Department, Wildlife Division
 11 Hazen Dr, Concord NH 03301-6500
 603-271-2461 Email: wildlife@wildlife.nh.gov



- NH Wildlife Management Area**
- Parcel for which NH Fish and Game or NH Dept of Natural & Cultural Resources is fee owner or holds an easement.
- Conservation or Public
- Municipal land
- State or Federal
- Other Public
- Private org.
- Wildlife Mgt. Unit
- Road or Street
- Unmaintained
- Trail
- Sign/Kiosk
- P Parking
- Gate