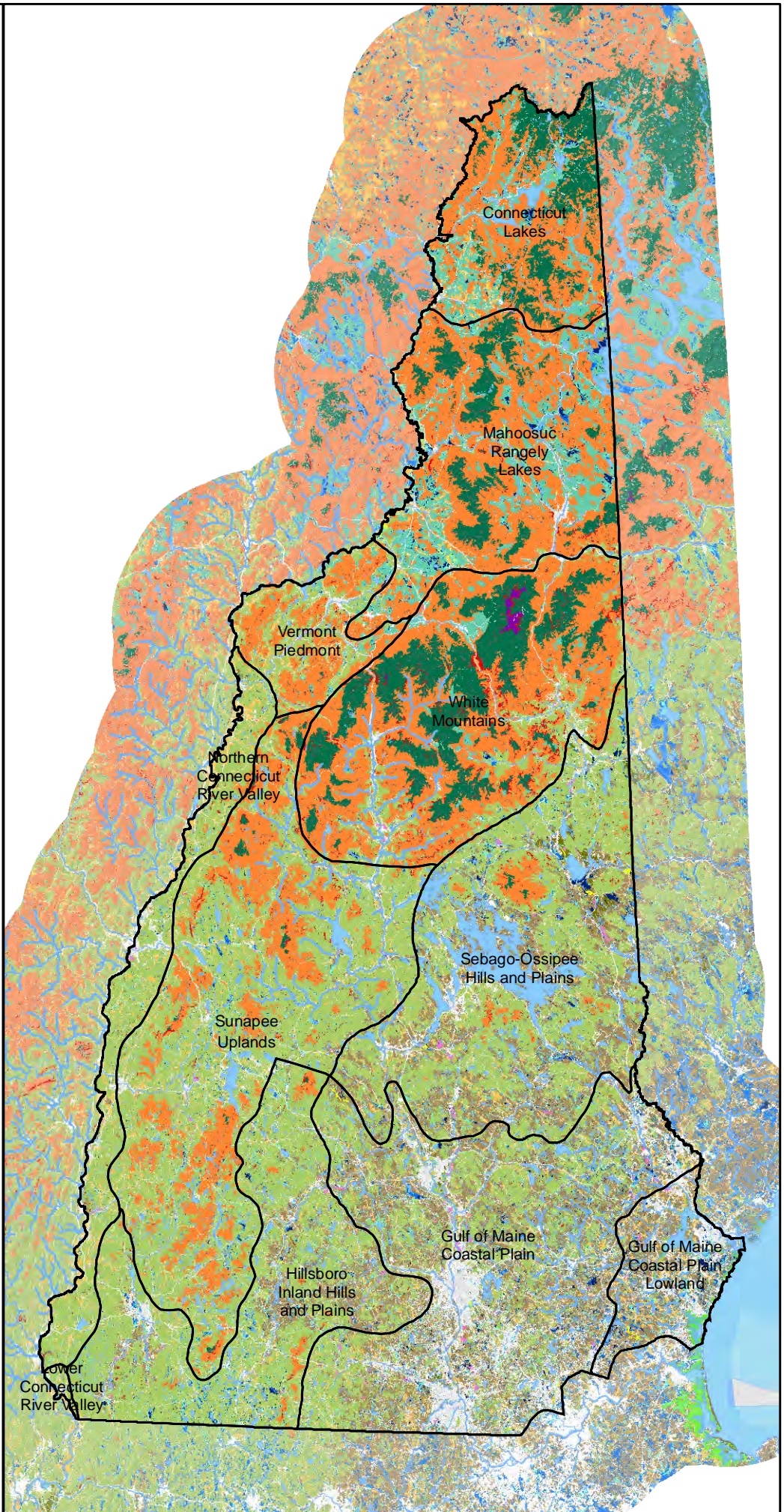


# NEW HAMPSHIRE WILDLIFE HABITAT LAND COVER 2020

-  Coastal Island/Rocky coast
-  Dune
-  Salt marsh
-  Peatland
-  Marsh and Shrub wetland
-  Northern or Temperate Swamp
-  Floodplain Forest
-  Grassland
-  Pine barren
-  Cliff or Talus slope
-  Rocky ridge
-  Alpine
-  High-elevation Spruce-fir
-  Low-elevation Spruce-fir
-  Northern hardwood-conifer
-  Appalachian oak-pine
-  Hemlock-hardwood-pine
-  Sand/Gravel
-  Developed Impervious
-  Developed or Barren
-  Open Water



Base map data provided by NH GRANIT.  
Intended for general planning use only.



NEW HAMPSHIRE  
**Wildlife Action  
Plan**

September 2015  
spatial data April 2020

