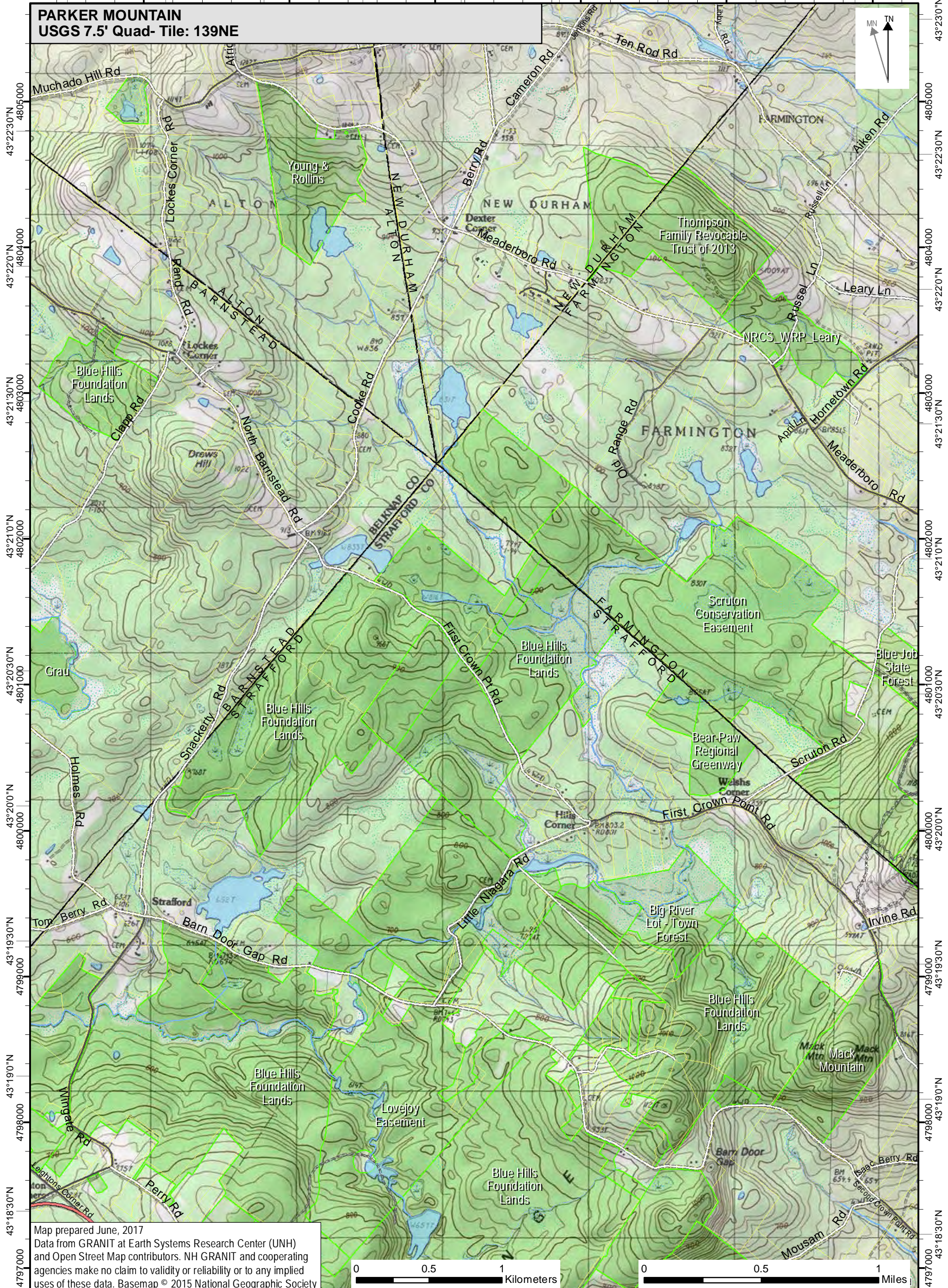
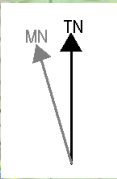


71°11'30"W 71°11'0"W 71°10'30"W 71°10'0"W 71°9'30"W 71°9'0"W 71°8'30"W 71°8'0"W 71°7'30"W

PARKER MOUNTAIN USGS 7.5' Quad- Tile: 139NE



43°22'30"N
43°22'0"N
43°21'30"N
43°21'0"N
43°20'30"N
43°20'0"N
43°19'30"N
43°19'0"N
43°18'30"N
43°18'0"N

4805000
4804000
4803000
4802000
4801000
4800000
4799000
4798000
4797000

71°11'30"W 71°11'0"W 71°10'30"W 71°10'0"W 71°9'30"W 71°9'0"W 71°8'30"W 71°8'0"W 71°7'30"W

Map prepared June, 2017
Data from GRANIT at Earth Systems Research Center (UNH) and Open Street Map contributors. NH GRANIT and cooperating agencies make no claim to validity or reliability or to any implied uses of these data. Basemap © 2015 National Geographic Society

