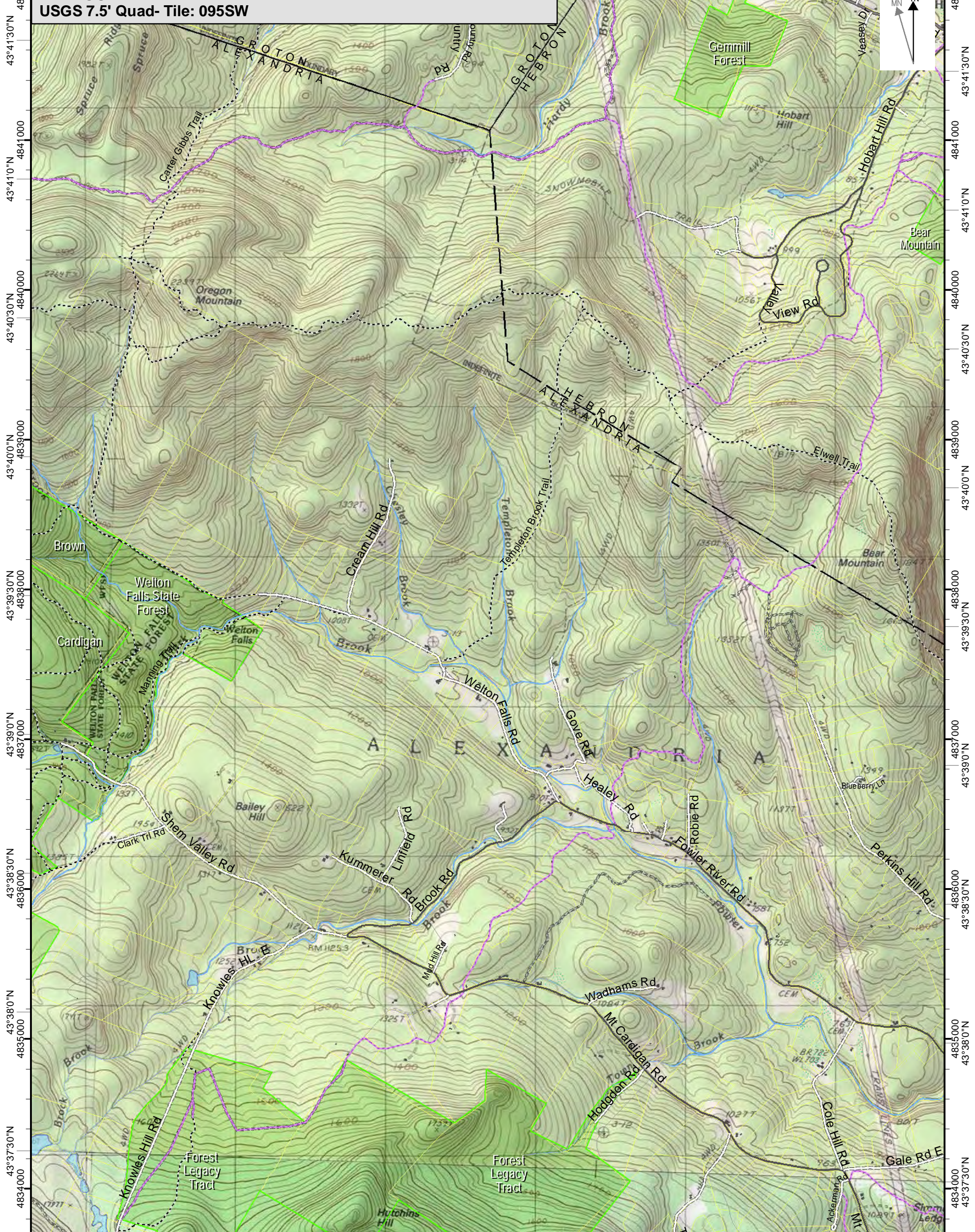
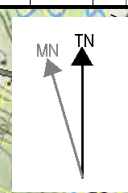


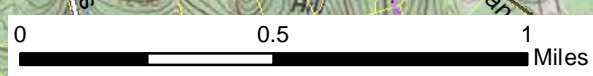
71°52'30"W 71°52'0"W 71°51'30"W 71°51'0"W 71°50'30"W 71°50'0"W 71°49'30"W 71°49'0"W 71°48'30"W

268000 269000 270000 271000 272000 273000

# NEWFOUND LAKE USGS 7.5' Quad- Tile: 095SW



Map prepared June, 2017  
Data from GRANIT at Earth Systems Research Center (UNH) and Open Street Map contributors. NH GRANIT and cooperating agencies make no claim to validity or reliability or to any implied uses of these data. Basemap © 2015 National Geographic Society



268000 269000 270000 271000 272000 273000 71°52'30"W 71°52'0"W 71°51'30"W 71°51'0"W 71°50'30"W 71°50'0"W 71°49'30"W 71°49'0"W 71°48'30"W

43°37'0"N  
43°37'30"N  
43°38'0"N  
43°38'30"N  
43°39'0"N  
43°39'30"N  
43°40'0"N  
43°40'30"N  
43°41'0"N  
43°41'30"N

4834000  
4834500  
4835000  
4835500  
4836000  
4836500  
4837000  
4837500  
4838000  
4838500  
4839000  
4839500  
4840000  
4840500  
4841000  
4841500  
4842000