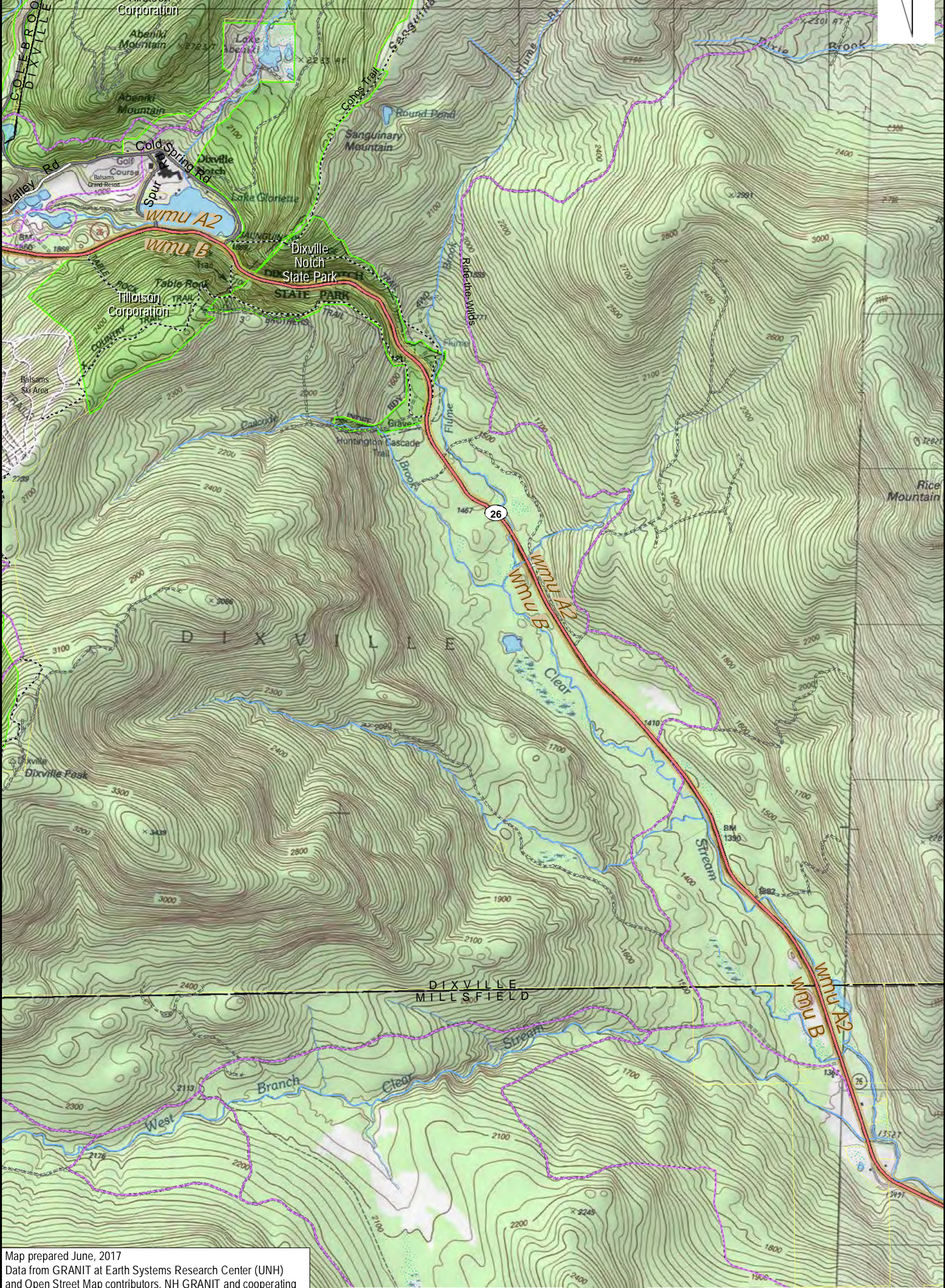
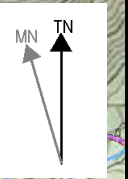


71°19'0"W 317000 71°18'30"W 318000 71°18'0"W 319000 71°17'30"W 320000 71°17'0"W 321000 71°16'30"W 322000 71°16'0"W 323000 71°15'30"W 324000 71°15'0"W 325000

DIXVILLE NOTCH
USGS 7.5' Quad- Tile: 020NE



Map prepared June, 2017
Data from GRANIT at Earth Systems Research Center (UNH)
and Open Street Map contributors. NH GRANIT and cooperating
agencies make no claim to validity or reliability or to any implied
uses of these data. Basemap © 2015 National Geographic Society

0 0.5 1 Kilometers

0 0.5 1 Miles

71°19'0"W 71°18'30"W 71°18'0"W 71°17'30"W 71°17'0"W 71°16'30"W 71°16'0"W 71°15'30"W 71°15'0"W 71°14'30"W

44°52'30"N 4972000
44°52'0"N 4971000
44°51'30"N 4970000
44°51'0"N 4969000
44°50'30"N 4968000
44°50'0"N 4967000
44°49'30"N 4966000
44°49'0"N 4965000
44°48'30"N 4964000

44°53'0"N 4973000
44°52'30"N 4972000
44°52'0"N 4971000
44°51'30"N 4970000
44°51'0"N 4969000
44°50'30"N 4968000
44°50'0"N 4967000
44°49'30"N 4966000
44°49'0"N 4965000
44°48'30"N 4964000