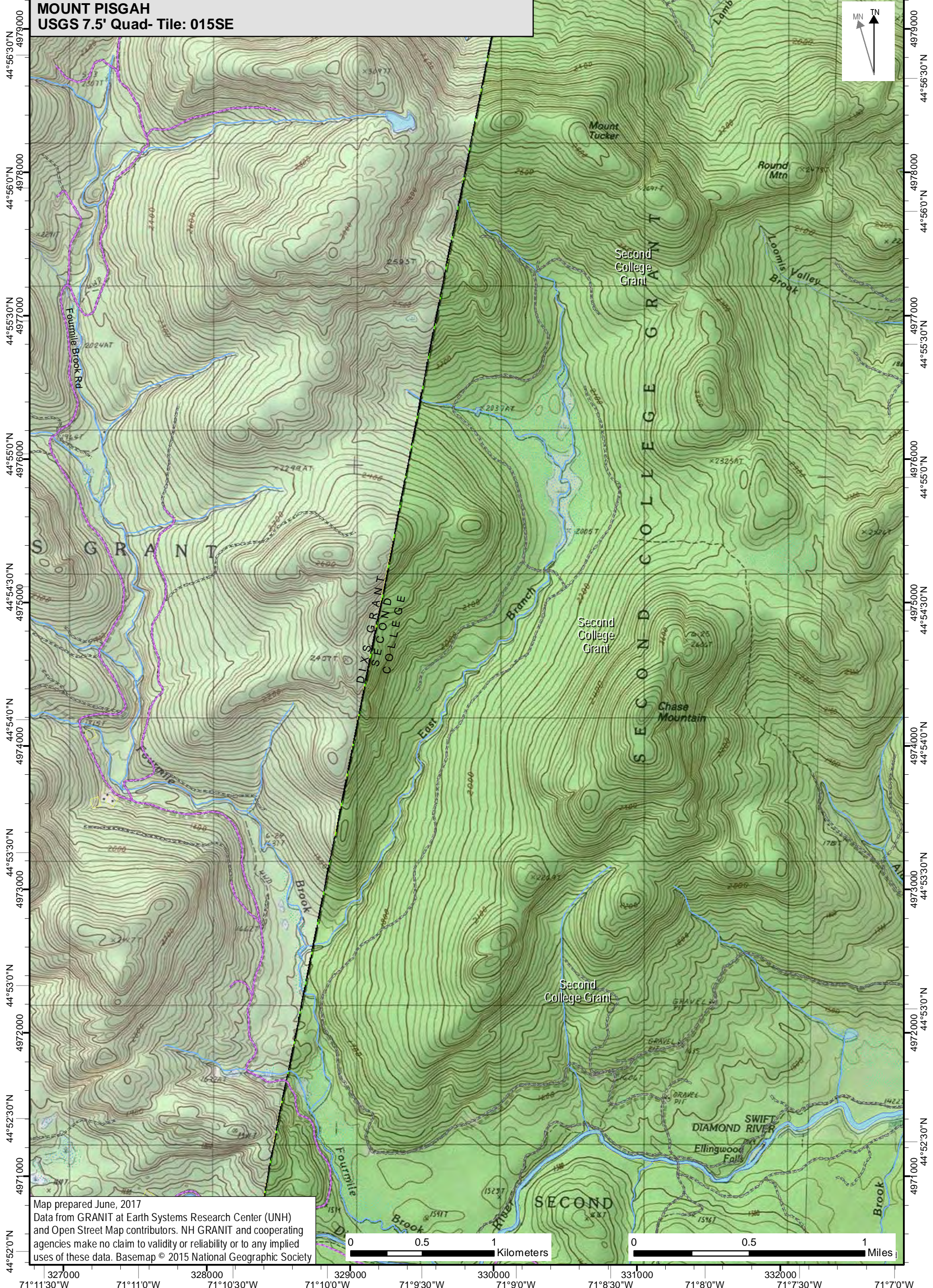
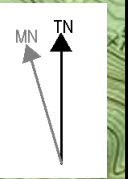


71°11'30"W 71°11'0"W 71°10'30"W 71°10'0"W 71°9'30"W 71°9'0"W 71°8'30"W 71°8'0"W 71°7'30"W
327000 328000 329000 330000 331000 332000

MOUNT PISGAH
USGS 7.5' Quad- Tile: 015SE



44°56'30"N 4979000
44°56'0"N 4978000
44°55'30"N 4977000
44°55'0"N 4976000
44°54'30"N 4975000
44°54'0"N 4974000
44°53'30"N 4973000
44°53'0"N 4972000
44°52'30"N 4971000
44°52'0"N 4970000

4979000 44°56'30"N
4978000 44°56'0"N
4977000 44°55'30"N
4976000 44°55'0"N
4975000 44°54'30"N
4974000 44°54'0"N
4973000 44°53'30"N
4972000 44°53'0"N
4971000 44°52'30"N
4970000 44°52'0"N

Map prepared June, 2017
Data from GRANIT at Earth Systems Research Center (UNH)
and Open Street Map contributors. NH GRANIT and cooperating
agencies make no claim to validity or reliability or to any implied
uses of these data. Basemap © 2015 National Geographic Society

0 0.5 1 Kilometers

0 0.5 1 Miles

327000 71°11'30"W 328000 71°11'0"W 329000 71°10'30"W 330000 71°10'0"W 331000 71°9'30"W 332000 71°9'0"W 71°8'30"W 71°8'0"W 71°7'30"W 71°7'0"W