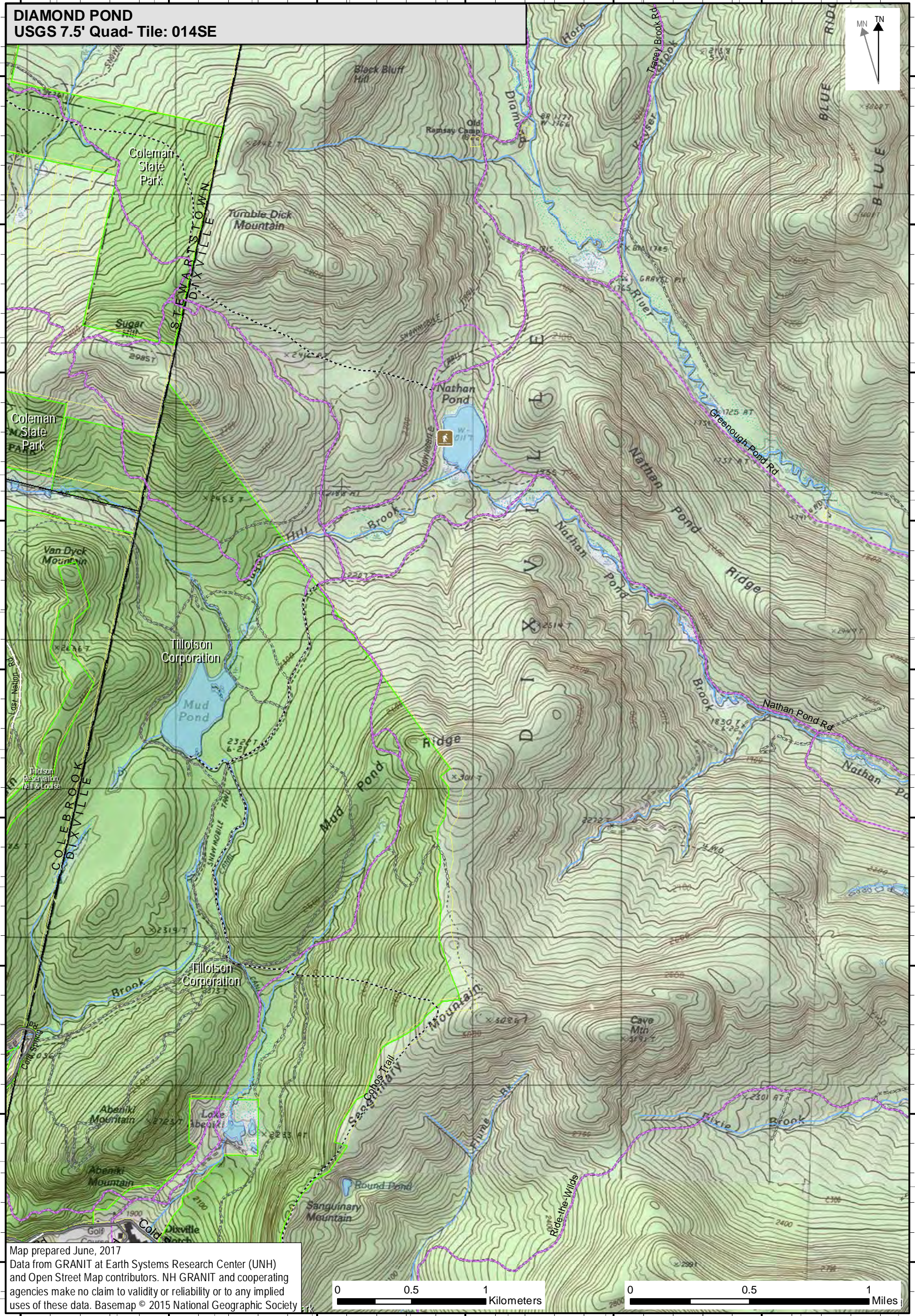
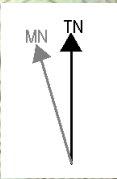


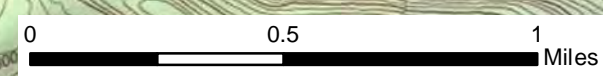
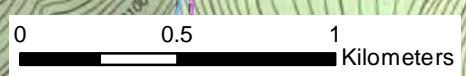
71°19'0"W 71°18'30"W 71°18'0"W 71°17'30"W 71°17'0"W 71°16'30"W 71°16'0"W 71°15'30"W 71°15'0"W



DIAMOND POND
USGS 7.5' Quad- Tile: 014SE



Map prepared June, 2017
Data from GRANIT at Earth Systems Research Center (UNH) and Open Street Map contributors. NH GRANIT and cooperating agencies make no claim to validity or reliability or to any implied uses of these data. Basemap © 2015 National Geographic Society



317000 318000 319000 320000 321000 322000 317000 318000 319000 320000 321000 322000

44°52'0"N

44°52'30"N

44°53'0"N

44°53'30"N

44°54'0"N

44°54'30"N

44°55'0"N

44°55'30"N

44°56'0"N

44°56'30"N

4971000

4972000

4973000

4974000

4975000

4976000

4977000

4978000

4979000

4970000

4971000

4972000

4973000

4974000

4975000

4976000

4977000

4978000

4979000

4970000

4971000

4972000

4973000

4974000

4975000

4976000

4977000

4978000

4979000

4970000

4971000

4972000

4973000

4974000

4975000

4976000

4977000

4978000

4979000

4971000

4972000

4973000

4974000

4975000

4976000

4977000

4978000

4979000

4970000

4971000

4972000

4973000

4974000

4975000

4976000

4977000

4978000

4979000

4970000

4971000

4972000

4973000

4974000

4975000

4976000

4977000

4978000

4979000

4970000

4971000

4972000

4973000

4974000

4975000

4976000

4977000

4978000

4979000

4970000

4971000

4972000

4973000

4974000

4975000

4976000

4977000

4978000

4979000