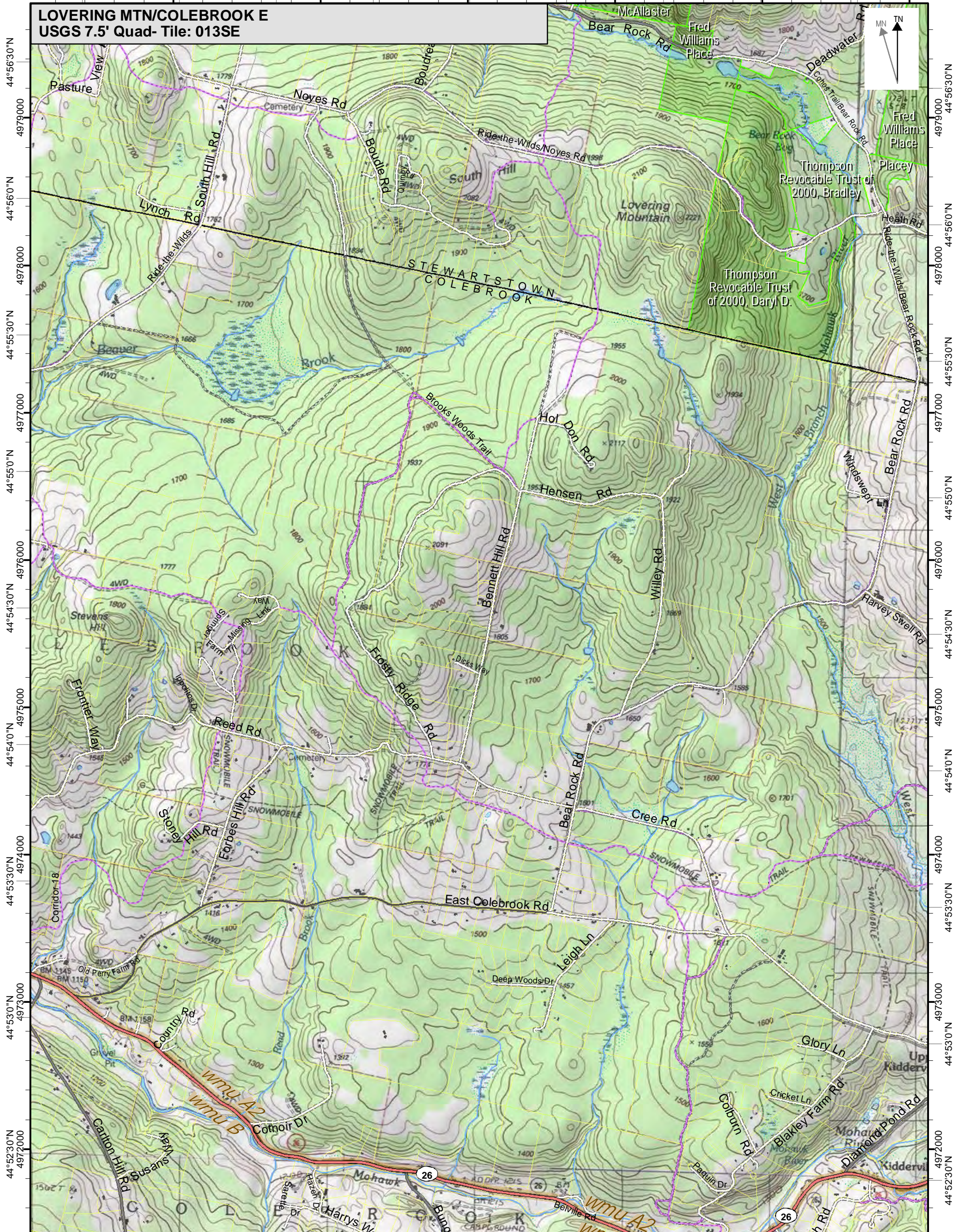
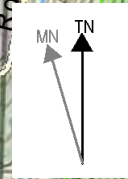


71°26'30"W 71°26'0"W 71°25'30"W 71°25'0"W 71°24'30"W 71°24'0"W 71°23'30"W 71°23'0"W 71°22'30"W 313000

LOVERING MTN/COLEBROOK E
USGS 7.5' Quad- Tile: 013SE



Map prepared June, 2017
Data from GRANIT at Earth Systems Research Center (UNH)
and Open Street Map contributors. NH GRANIT and cooperating
agencies make no claim to validity or reliability or to any implied
uses of these data. Basemap © 2015 National Geographic Society

0 0.5 1 Kilometers

0 0.5 1 Miles

71°26'30"W 71°26'0"W 71°25'30"W 71°25'0"W 71°24'30"W 71°24'0"W 71°23'30"W 71°23'0"W 71°22'30"W 71°22'0"W 4971000