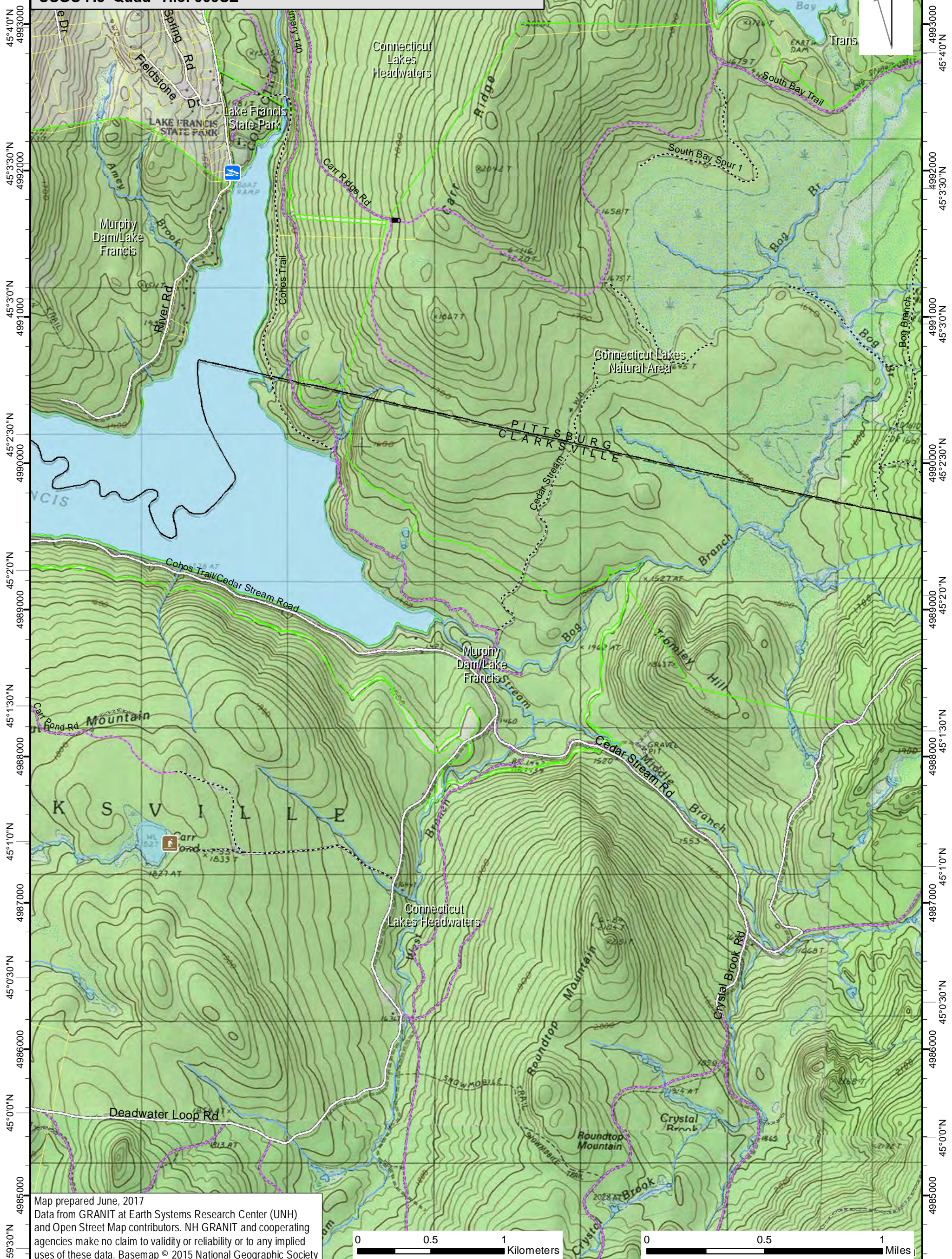
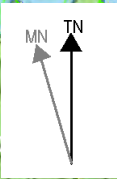


71°19'0"W 71°18'30"W 71°18'0"W 71°17'30"W 71°17'0"W 71°16'30"W 71°16'0"W 71°15'30"W 71°15'0"W

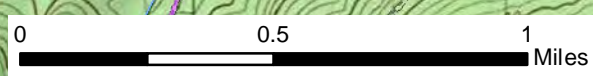
LAKE FRANCIS
USGS 7.5' Quad- Tile: 009SE



45°4'0"N 4993000
45°3'30"N 4992000
45°3'0"N 4991000
45°2'30"N 4990000
45°2'0"N 4989000
45°1'30"N 4988000
45°1'0"N 4987000
45°0'30"N 4986000
45°0'0"N 4985000
44°59'30"N 4984000

4993000 45°4'0"N
4992000 45°3'30"N
4991000 45°3'0"N
4990000 45°2'30"N
4989000 45°2'0"N
4988000 45°1'30"N
4987000 45°1'0"N
4986000 45°0'30"N
4985000 45°0'0"N
4984000 44°59'30"N

Map prepared June, 2017
Data from GRANIT at Earth Systems Research Center (UNH) and Open Street Map contributors. NH GRANIT and cooperating agencies make no claim to validity or reliability or to any implied uses of these data. Basemap © 2015 National Geographic Society



71°19'0"W 71°18'30"W 71°18'0"W 71°17'30"W 71°17'0"W 71°16'30"W 71°16'0"W 71°15'30"W 71°15'0"W 71°14'30"W