

For fishing regulation information, please refer to the NHFGD Freshwater Fishing Digest.

Contact: NHFGD Inland Fisheries Division, Concord
E-mail: fish@wildlife.nh.gov Phone: 603-271-2501

WILLAND POND Dover, Somersworth

FISHERY: Warmwater **ACRES:** 66

TROPIC LEVEL: MESO

AVG. DEPTH: 15 **MAX. DEPTH:** 37


SPECIES: RT,LMB,ECP,BBH,WP, BC,YP

ADDITIONAL INFO: No motors

ACCESS: Cartop

Please contact NH Dept of Safety, Marine Patrol for info. on water body/boat/motor restrictions: (603) 293-2037 www.nh.gov/safety

Public Water Access site

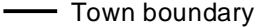
 Canoe/cartop

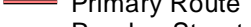
 Shorebank

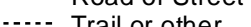
 Ramp


 Bathymetric contour (feet)


Bathymetry provided by the NH Department of Environmental Services, Watershed Mgt Bureau

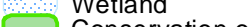
 Town boundary

 Primary Route

 Road or Street

 Trail or other

 Stream or Shoreline

 Surface Water

 Wetland

 Conservation or Public land

 Cleared

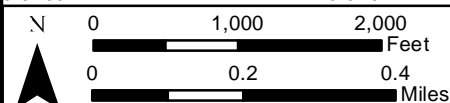
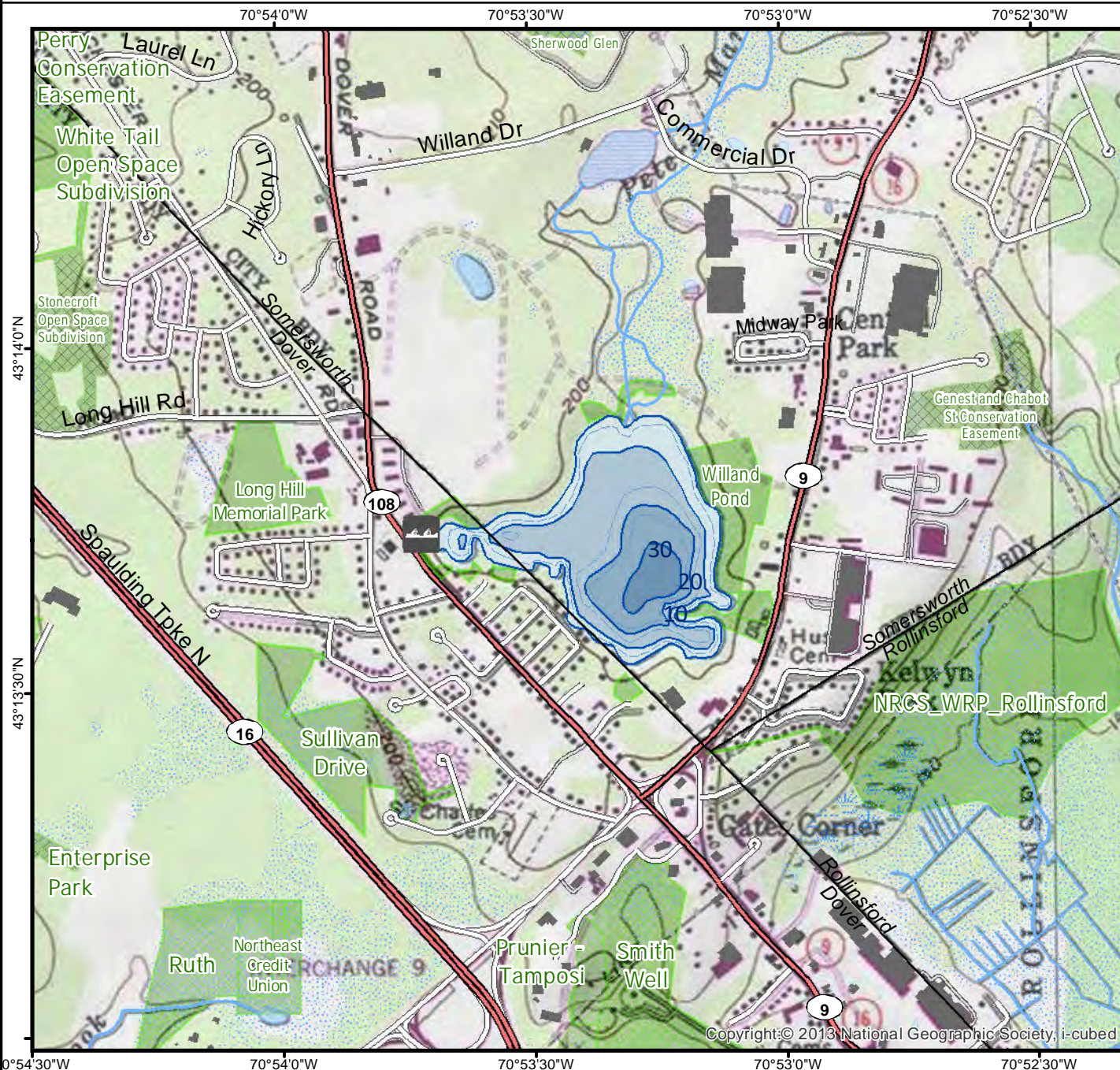
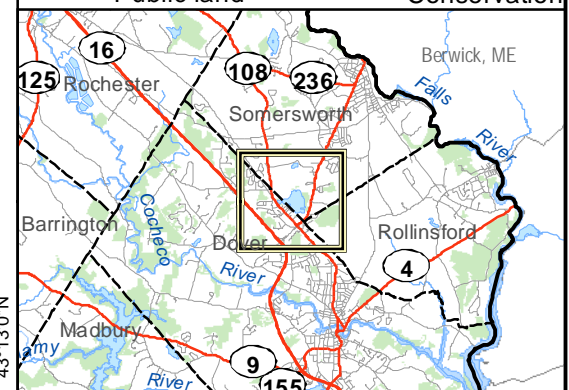
 Forest

 Contour

 Building

Source: USGS

 Restricted Access Conservation



Base map data from NH GRANIT at Earth Systems Research Center (UNH) and Open Street Map contributors. UNH, NH Fish & Game and the cooperating agencies make no claim as to the validity or reliability or to any implied uses of these data. NOT INTENDED FOR BOAT NAVIGATION.

Directions: Rt 108