

For fishing regulation information, please refer to the NHFGD Freshwater Fishing Digest.

Contact: NHFGD Region 4 (Southwest NH), Keene  
E-mail: [reg4@wildlife.nh.gov](mailto:reg4@wildlife.nh.gov) Phone: 603-352-9669

## THORNDIKE POND Dublin, Jaffrey

**FISHERY:** Warmwater **ACRES:** 252

**TROPIC LEVEL:** OLIGO

**AVG. DEPTH:** 11 **MAX. DEPTH:** 23


**SPECIES:** SMB, LMB, ECP, BBH, BG

**ADDITIONAL INFO:** Dangerous to back boat, limited parking

**ACCESS:** ramp, gravel

Please contact NH Dept of Safety, Marine Patrol for info. on water body/boat/motor restrictions: (603) 293-2037 [www.nh.gov/safety](http://www.nh.gov/safety)

### Public Water Access site


 Canoe/cartop

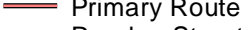
 Shorebank

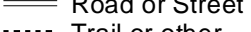
 Ramp

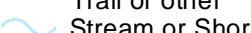
 Bathymetric contour (feet)

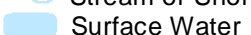
Bathymetry provided by the NH Department of Environmental Services, Watershed Mgt Bureau

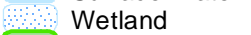
 Town boundary

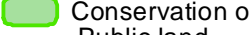
 Primary Route

 Road or Street

 Trail or other

 Stream or Shoreline

 Surface Water

 Wetland

 Conservation or Public land

 Cleared

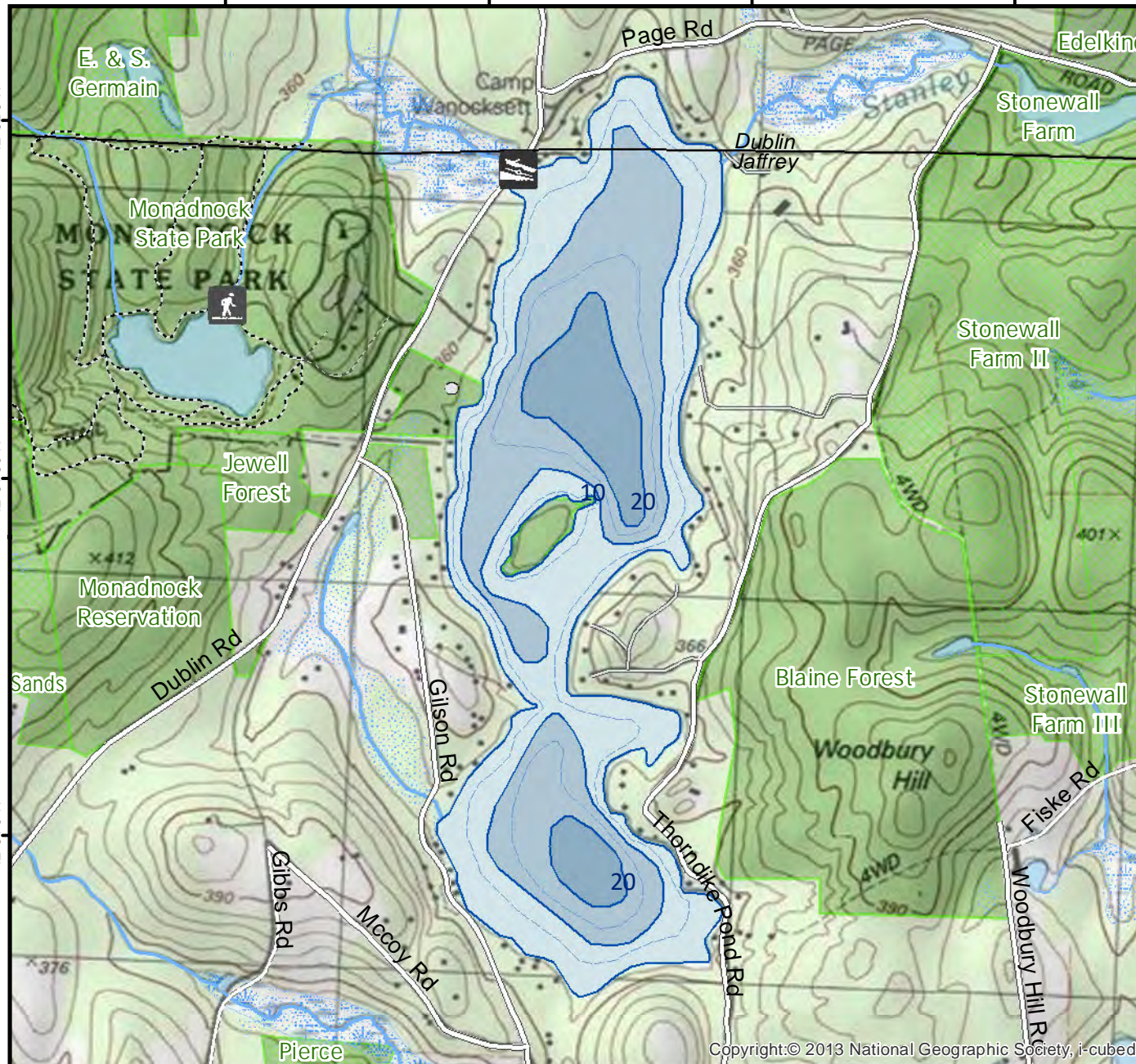
 Forest

 Contour

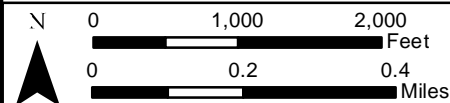
 Building

*Source: USGS*

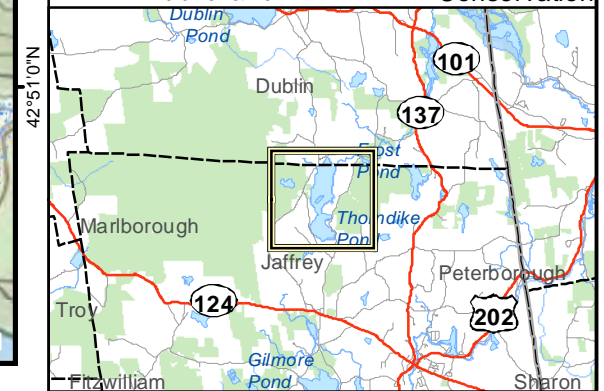
 Restricted Access Conservation



Copyright:© 2013 National Geographic Society, i-cubed



Base map data from NH GRANIT at Earth Systems Research Center (UNH) and Open Street Map contributors. UNH, NH Fish & Game and the cooperating agencies make no claim as to the validity or reliability or to any implied uses of these data. NOT INTENDED FOR BOAT NAVIGATION.



**Directions:** Dublin Rd