

For fishing regulation information, please refer to the NHFGD Freshwater Fishing Digest.

Contact: NHFGD Region 2 (Lakes Region), New Hampton
 E-mail: reg2@wildlife.nh.gov Phone: 603-744-5470

POVERTY POND Hill

FISHERY: ACRES: 17

TROPIC LEVEL: MESO

AVG. DEPTH: 6 MAX. DEPTH: 34

SPECIES:

ADDITIONAL INFO:

ACCESS: shorebank

Please contact NH Dept of Safety, Marine Patrol for info. on water body/boat/motor restrictions: (603) 293-2037 www.nh.gov/safety

Public Water Access site

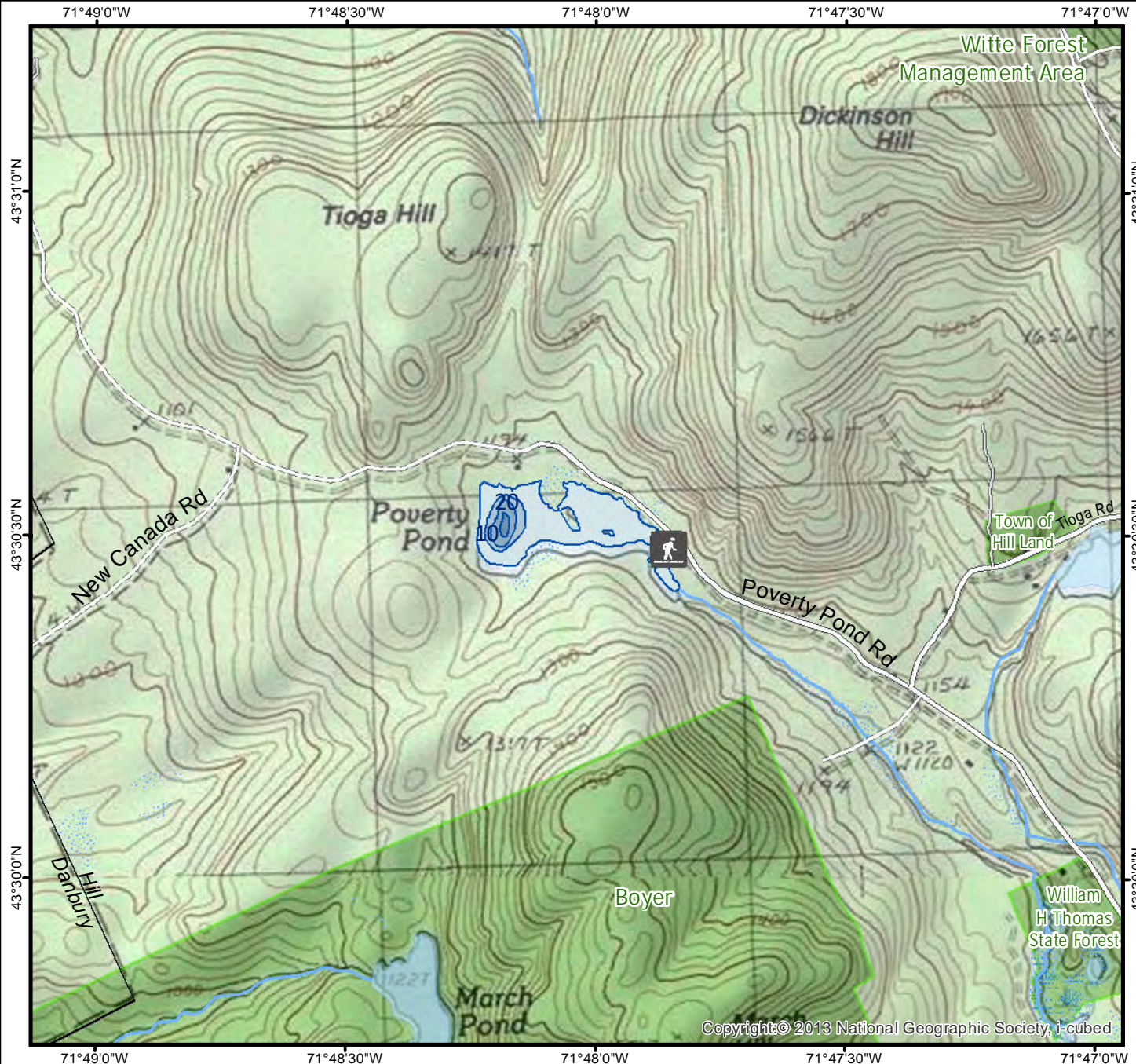
- Canoe/cartop
- Shorebank
- Ramp

Bathymetric contour (feet)

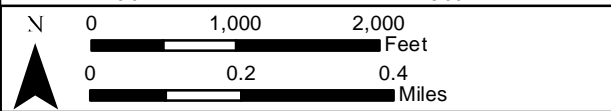
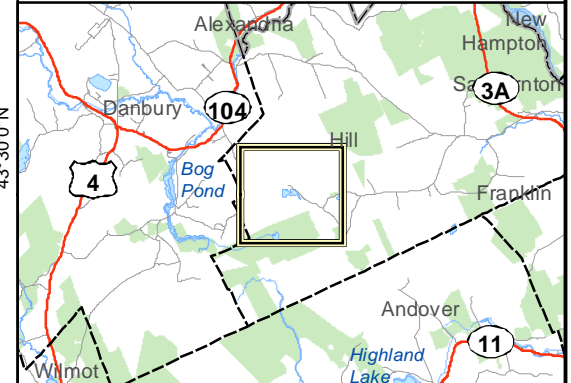
Bathymetry provided by the NH Department of Environmental Services, Watershed Mgt Bureau

- Town boundary
- Primary Route
- Road or Street
- Trail or other
- Stream or Shoreline
- Surface Water
- Wetland
- Conservation or Public land
- Cleared Forest
- Contour
- Building
- Restricted Access Conservation

Source: USGS



Copyright© 2013 National Geographic Society, i-cubed



Base map data from NH GRANIT at Earth Systems Research Center (UNH) and Open Street Map contributors. UNH, NH Fish & Game and the cooperating agencies make no claim as to the validity or reliability or to any implied uses of these data. NOT INTENDED FOR BOAT NAVIGATION.

Directions: Poverty Pond Rd