

For fishing regulation information, please refer to the NHFGD Freshwater Fishing Digest.

Contact: NHFGD Region 4 (Southwest NH), Keene  
E-mail: reg4@wildlife.nh.gov Phone: 603-352-9669

# OTTER BROOK POOL Roxbury

**FISHERY:**                      **ACRES:** 84

**TROPIC LEVEL:** MESO

**AVG. DEPTH:** 0            **MAX. DEPTH:** 0

**SPECIES:**

**ADDITIONAL INFO:**

**ACCESS:** Otter Brook State Park Boat Ramp

Please contact NH Dept of Safety, Marine Patrol for info. on water body/boat/motor restrictions: (603) 293-2037 www.nh.gov/safety

**Public Water Access site**



Canoe/cartop



Shorebank

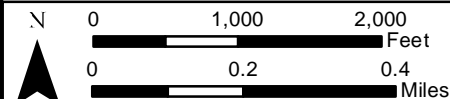
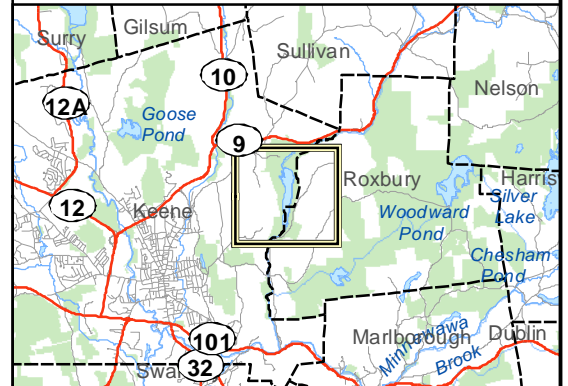
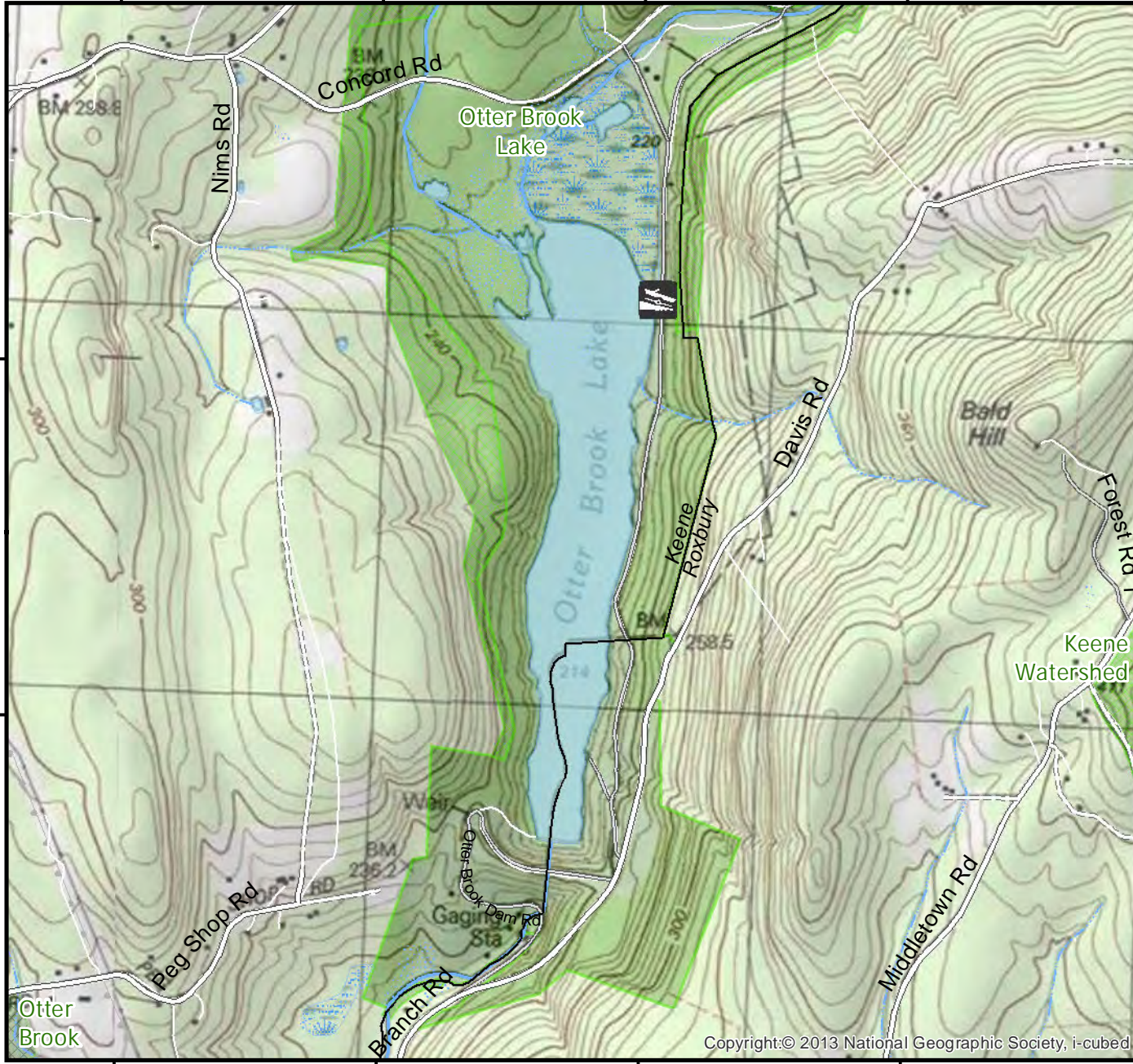


Ramp

Bathymetric contour (feet)

Bathymetry provided by the NH Department of Environmental Services, Watershed Mgt Bureau

- Town boundary
  - Primary Route
  - Road or Street
  - Trail or other
  - Stream or Shoreline
  - Surface Water
  - Wetland
  - Conservation or Public land
  - Restricted Access Conservation
  - Cleared
  - Forest
  - Contour
  - Building
- Source: USGS*



Base map data from NH GRANIT at Earth Systems Research Center (UNH) and Open Street Map contributors. UNH, NH Fish & Game and the cooperating agencies make no claim as to the validity or reliability or to any implied uses of these data. NOT INTENDED FOR BOAT NAVIGATION.

**Directions:** Rt 9