

For fishing regulation information, please refer to the NHFGD Freshwater Fishing Digest.

Contact: NHFGD Region 2 (Lakes Region), New Hampton
E-mail: reg2@wildlife.nh.gov Phone: 603-744-5470

MIRROR LAKE Tuftonboro

FISHERY: ACRES: 333

TROPIC LEVEL: OLIGO

AVG. DEPTH: 13 **MAX. DEPTH:** 43

SPECIES:

ADDITIONAL INFO:

ACCESS: Town Boat Launch

Please contact NH Dept of Safety, Marine Patrol for info. on water body/boat/motor restrictions:
(603) 293-2037 www.nh.gov/safety

Public Water Access site

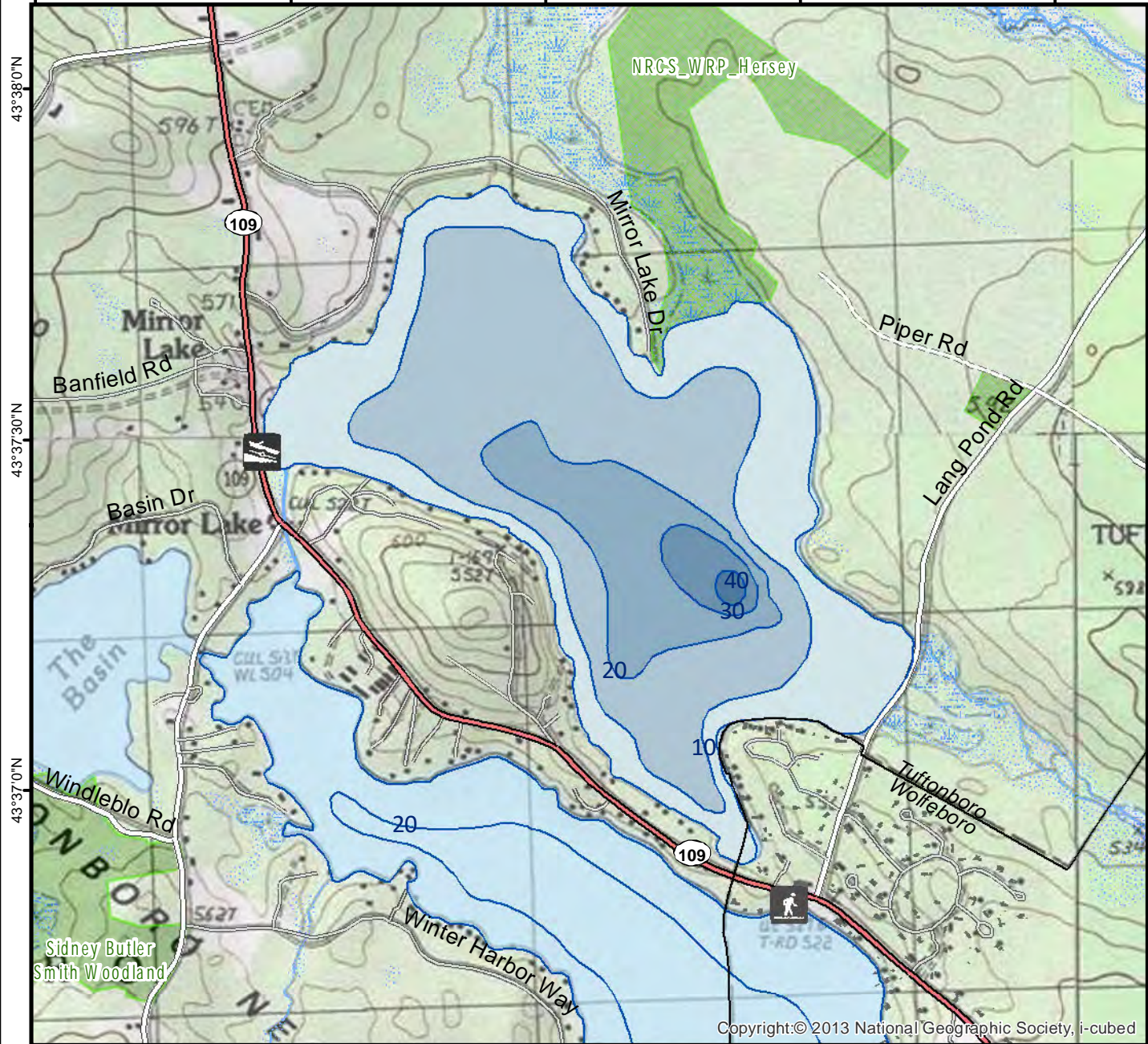
- Canoe/cartop
- Shorebank
- Ramp

Bathymetric contour (feet)

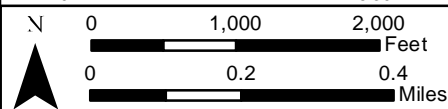
Bathymetry provided by the NH Department of Environmental Services, Watershed Mgt Bureau

- Town boundary
 - Primary Route
 - Road or Street
 - Trail or other
 - Stream or Shoreline
 - Surface Water
 - Wetland
 - Conservation or Public land
 - Cleared Forest
 - Contour
 - Building
 - Restricted Access Conservation
- Source: USGS

71°17'0"W 71°16'30"W 71°16'0"W 71°15'30"W 71°15'0"W

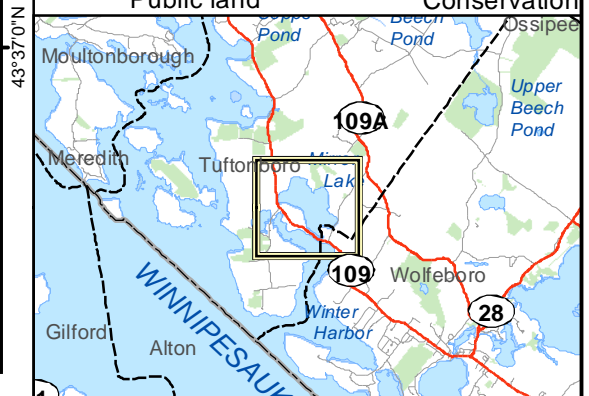


71°17'0"W 71°16'30"W 71°16'0"W 71°15'30"W 71°15'0"W



Base map data from NH GRANIT at Earth Systems Research Center (UNH) and Open Street Map contributors. UNH, NH Fish & Game and the cooperating agencies make no claim as to the validity or reliability or to any implied uses of these data. NOT INTENDED FOR BOAT NAVIGATION.

43°38'0"N
43°37'30"N
43°37'0"N



Directions: Rt 109