

For fishing regulation information, please refer to the NHFGD Freshwater Fishing Digest.

Contact: NHFGD Region 2 (Lakes Region), New Hampton
E-mail: reg2@wildlife.nh.gov Phone: 603-744-5470

MERRYMEETING LAKE New Durham

FISHERY: Cold/Warm **ACRES:** 1233

TROPIC LEVEL: OLIGO

AVG. DEPTH: 29 **MAX. DEPTH:** 120

SPECIES:
RT,LLS,LT,SMB,ECP,BBH,BRB

ADDITIONAL INFO: lake trout and/or salmon lake

ACCESS: NHFG ramp south shore

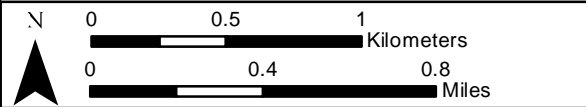
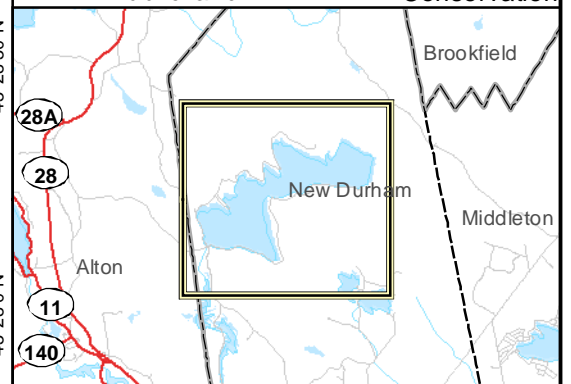
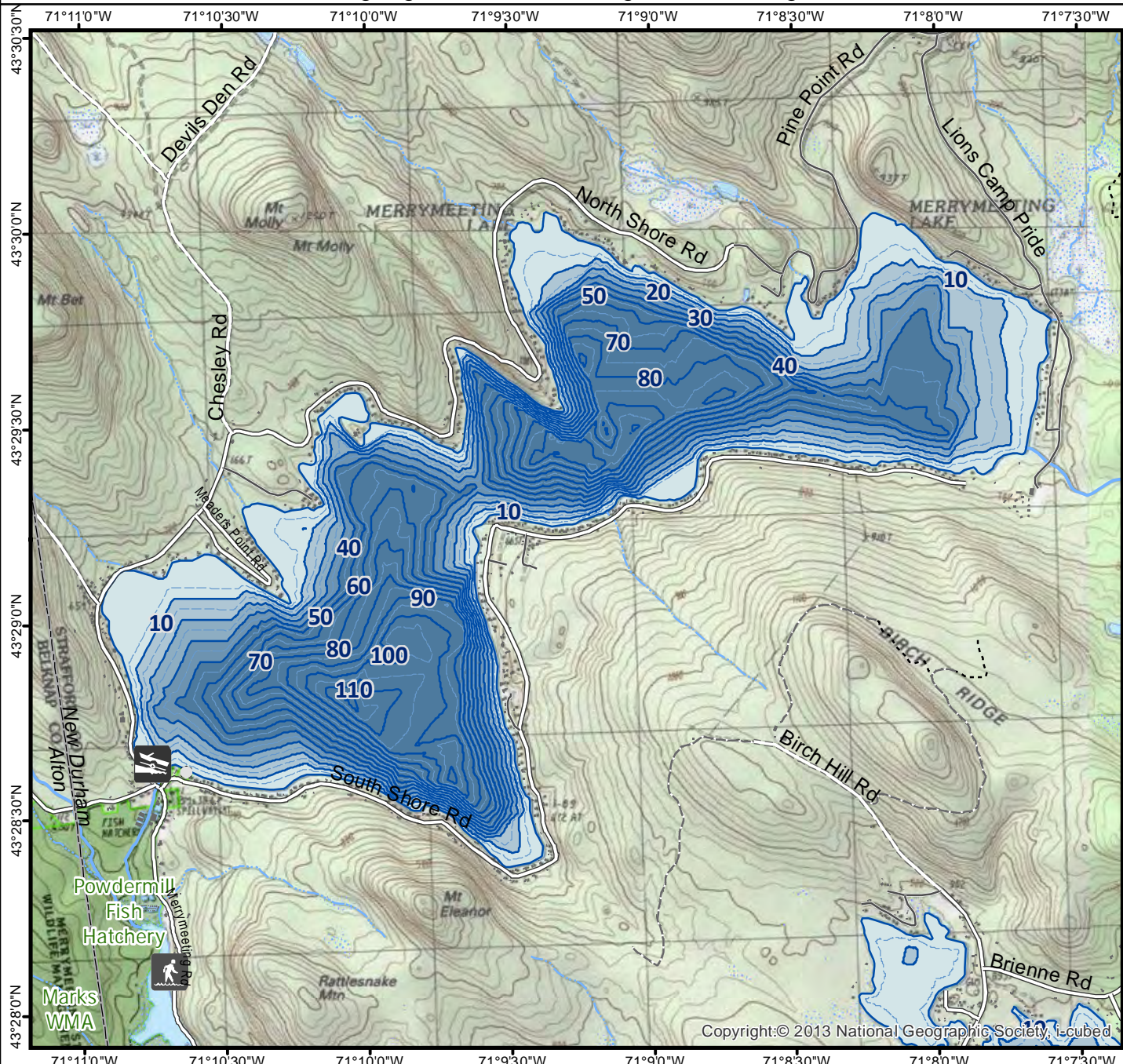
Please contact NH Dept of Safety, Marine Patrol for info. on water body/boat/motor restrictions: (603) 293-2037 www.nhmarinepatrol.com

Public Water Access site

- Canoe/cartop
- Shorebank
- Ramp
- Bathymetric contour (feet)

Bathymetry provided by the NH Department of Environmental Services, Watershed Mgt Bureau

Town boundary	Cleared
Primary Route	Forest
Road or Street	Contour
Trail or other	Building
Stream or Shoreline	<i>Source: USGS</i>
Surface Water	
Wetland	
Conservation or Public land	Restricted Access Conservation



Base map data from NH GRANIT at Earth Systems Research Center (UNH) and Open Street Map contributors. UNH, NH Fish & Game and the cooperating agencies make no claim as to the validity or reliability or to any implied uses of these data. NOT INTENDED FOR BOAT NAVIGATION.

Directions: