

For fishing regulation information, please refer to the NHFGD Freshwater Fishing Digest.

Contact: NHFGD Inland Fisheries Division, Concord
E-mail: fish@wildlife.nh.gov Phone: 603-271-2501

MASSABESIC LAKE Auburn, Manchester

FISHERY: Cold/Warm **ACRES:** 2560

TROPIC LEVEL: MESO

AVG. DEPTH: 17 **MAX. DEPTH:** 50

SPECIES: EBT,RT,BT,SMB,LMB,ECP,
BBH,WP,NP,BC,BG,AE,YP

ADDITIONAL INFO: boat/motor restrictions

ACCESS: Clair's Landing ramp; Candia Rd ramp; DeerNeck launch

Please contact NH Dept of Safety, Marine Patrol for info. on water body/boat/motor restrictions:
(603) 293-2037 www.nhmarinepatrol.com

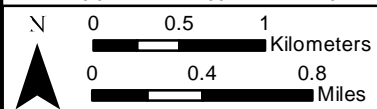
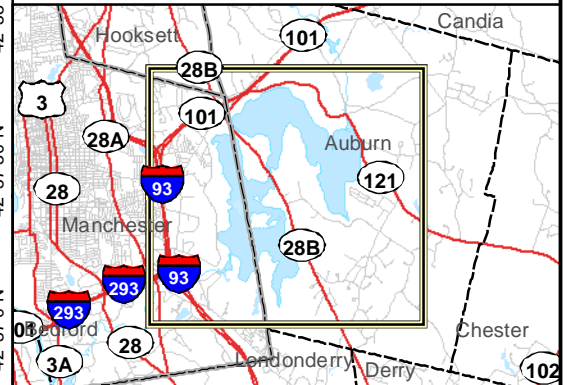
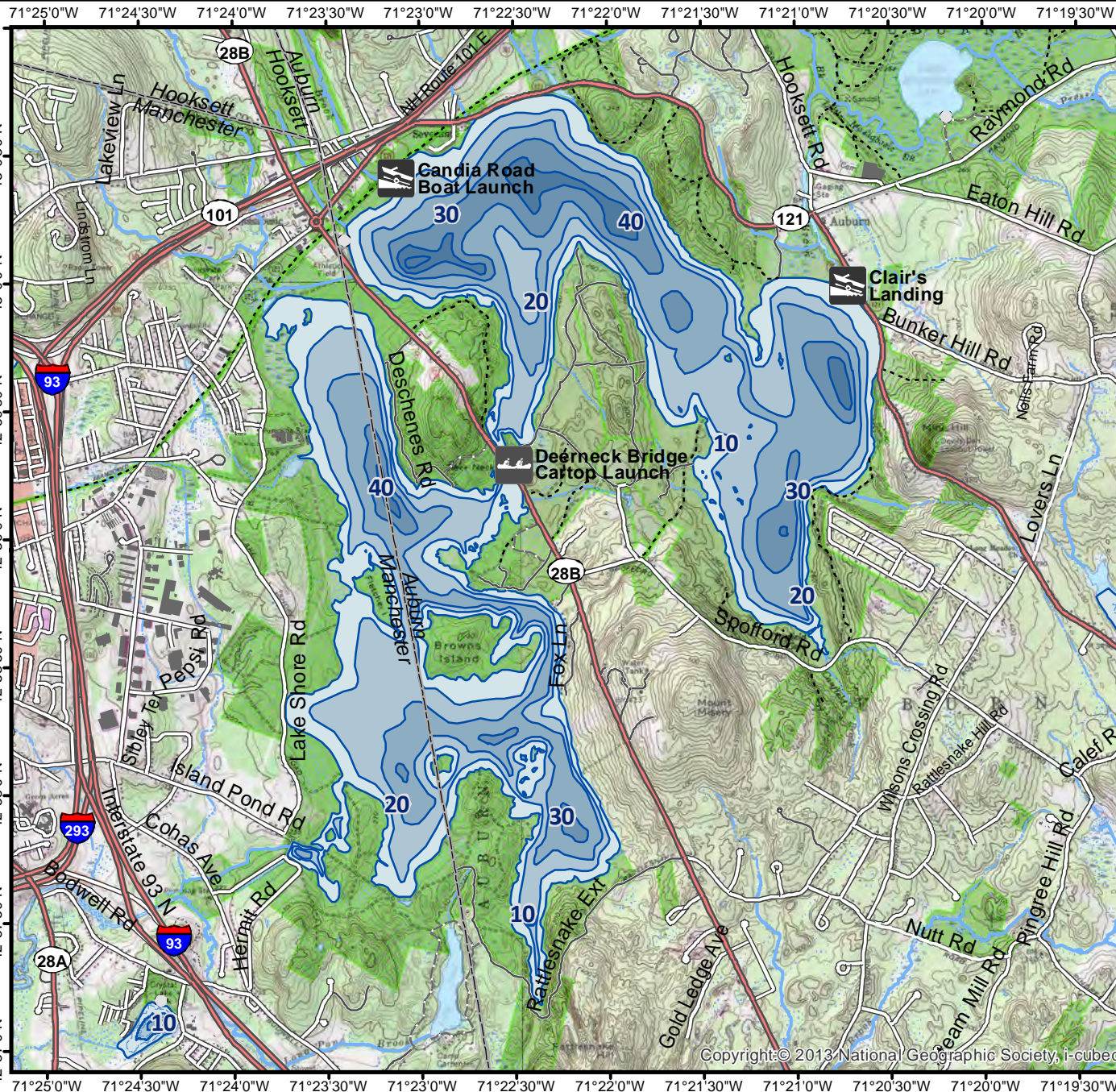
Public Water Access site

- Canoe/cartop
- Shorebank
- Ramp

Bathymetric contour (feet)

Bathymetry provided by the NH Department of Environmental Services, Watershed Mgt Bureau

- Town boundary
 - Primary Route
 - Road or Street
 - Trail or other
 - Stream or Shoreline
 - Surface Water
 - Wetland
 - Conservation or Public land
 - Cleared
 - Forest
 - Contour
 - Building
 - Restricted Access Conservation
- Source: USGS



Base map data from NH GRANIT at Earth Systems Research Center (UNH) and Open Street Map contributors. UNH, NH Fish & Game and the cooperating agencies make no claim as to the validity or reliability or to any implied uses of these data. NOT INTENDED FOR BOAT NAVIGATION.

Directions: Rt 121