

For fishing regulation information, please refer to the NHFGD Freshwater Fishing Digest.

Contact: NHFGD Region 4 (Southwest NH), Keene
E-mail: reg4@wildlife.nh.gov Phone: 603-352-9669

GUSTIN POND Marlow

FISHERY: Coldwater **ACRES:** 10

TROPIC LEVEL: EUTRO

AVG. DEPTH: 10 **MAX. DEPTH:** 20


SPECIES: EBT,RT,BT,SMB,BBH

ADDITIONAL INFO:

ACCESS: Roadside Fishing

Please contact NH Dept of Safety, Marine Patrol for info. on water body/boat/motor restrictions: (603) 293-2037 www.nh.gov/safety

Public Water Access site

 Canoe/cartop


 Shorebank


 Ramp

 Bathymetric contour (feet)


Bathymetry provided by the NH Department of Environmental Services, Watershed Mgt Bureau


 Town boundary


 Primary Route


 Road or Street

 Trail or other

 Stream or Shoreline

 Surface Water

 Wetland

 Conservation or Public land

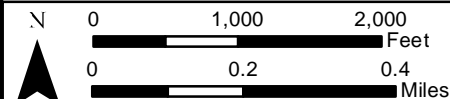
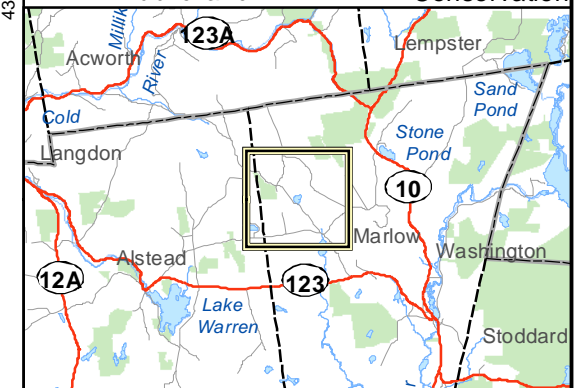
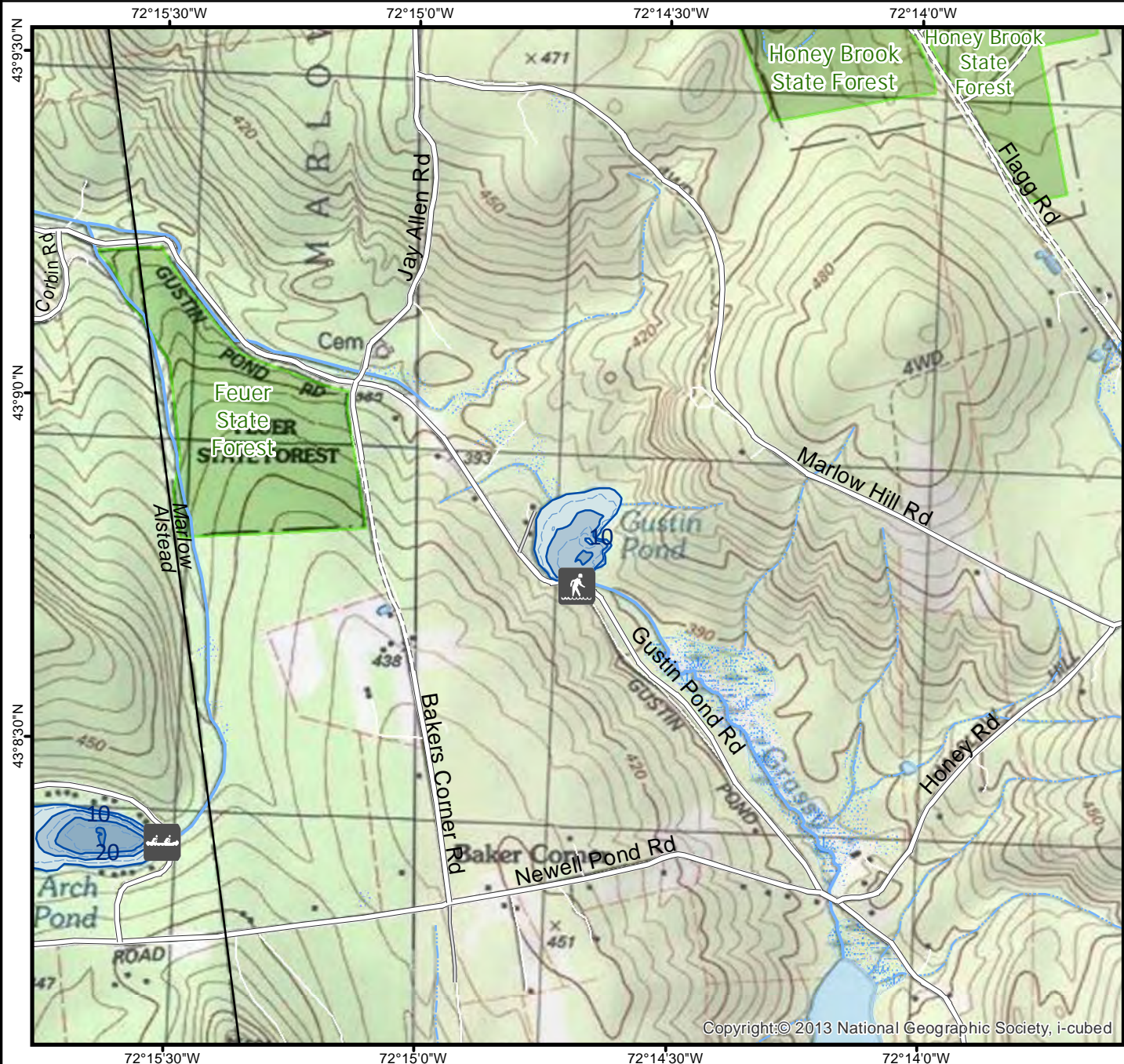
 Cleared Forest

 Contour

 Building

 Restricted Access Conservation

Source: USGS



Base map data from NH GRANIT at Earth Systems Research Center (UNH) and Open Street Map contributors. UNH, NH Fish & Game and the cooperating agencies make no claim as to the validity or reliability or to any implied uses of these data. NOT INTENDED FOR BOAT NAVIGATION.

Directions: Rt 123 to Gustin Pond Rd, 1.6 mi to pond