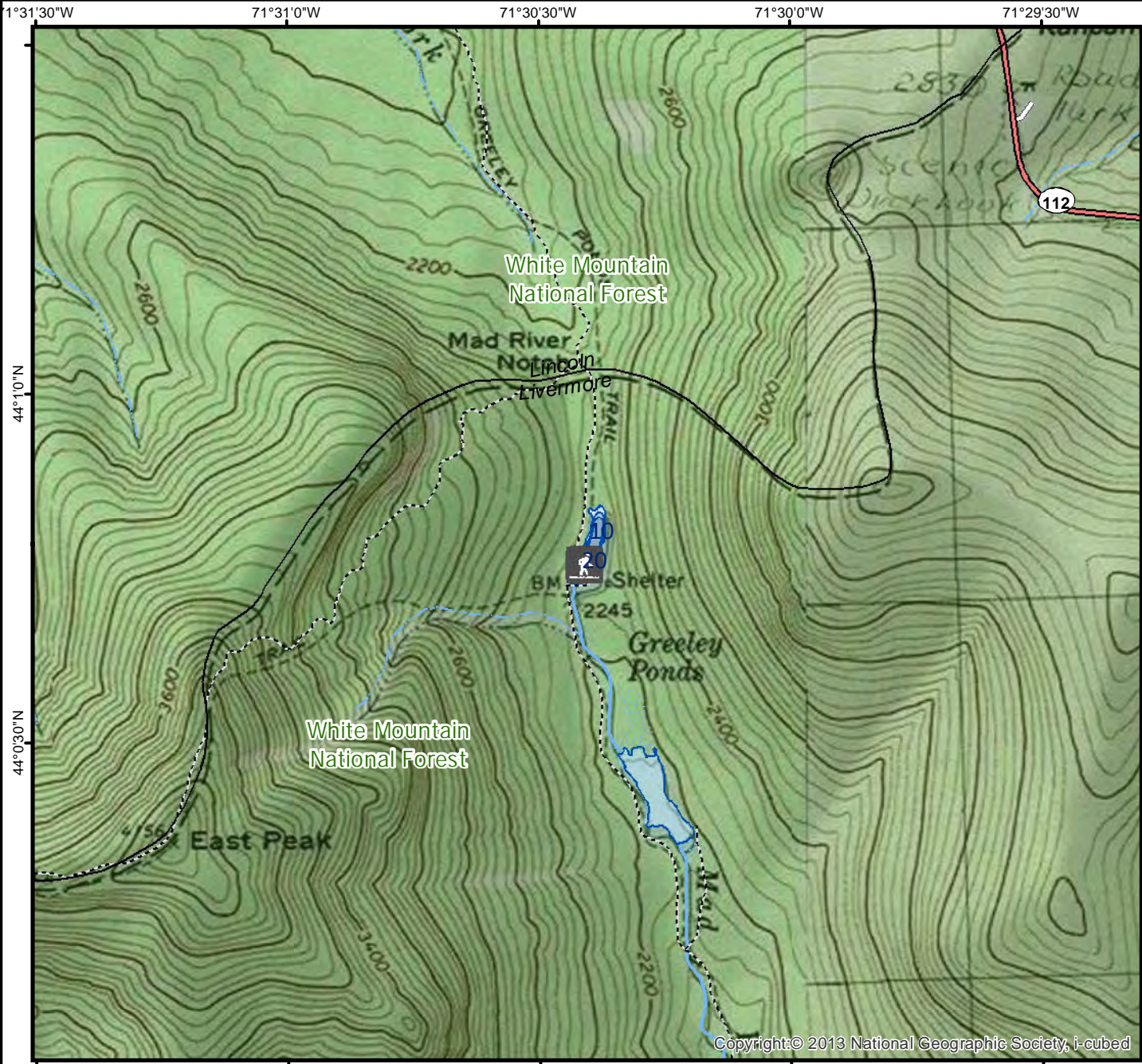


For fishing regulation information, please refer to the NHFGD Freshwater Fishing Digest.

Contact: NHFGD Region 2 (Lakes Region), New Hampton
E-mail: reg2@wildlife.nh.gov Phone: 603-744-5470

GREELEY POND, UPPER Livermore



FISHERY: Coldwater **ACRES:** 2
TROPIC LEVEL: OLIGO
AVG. DEPTH: 16 **MAX. DEPTH:** 25
SPECIES: EBT

ADDITIONAL INFO: no motors

ACCESS: remote walk-in

Please contact NH Dept of Safety, Marine Patrol for info. on water body/boat/motor restrictions: (603) 293-2037 www.nh.gov/safety

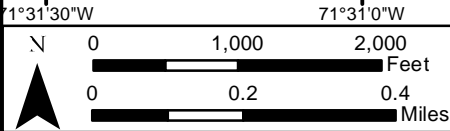
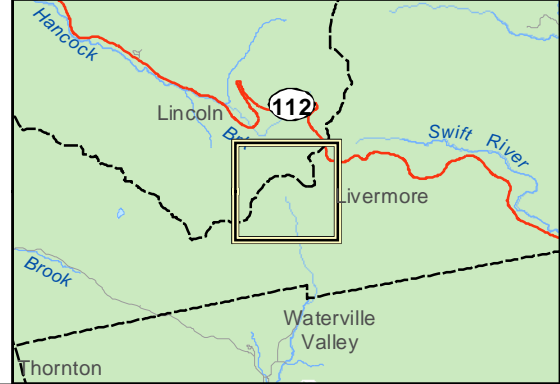
Public Water Access site

- Canoe/cartop
- Shorebank
- Ramp

Bathymetric contour (feet)

Bathymetry provided by the NH Department of Environmental Services, Watershed Mgt Bureau

- Town boundary
 - Primary Route
 - Road or Street
 - Trail or other
 - Stream or Shoreline
 - Surface Water
 - Wetland
 - Conservation or Public land
 - Cleared Forest
 - Contour
 - Building
 - Restricted Access Conservation
- Source: USGS



Base map data from NH GRANIT at Earth Systems Research Center (UNH) and Open Street Map contributors. UNH, NH Fish & Game and the cooperating agencies make no claim as to the validity or reliability or to any implied uses of these data. NOT INTENDED FOR BOAT NAVIGATION.

Directions: Rt 112 Kancamagus Hwy