

For fishing regulation information, please refer to the NHFGD Freshwater Fishing Digest.

Contact: NHFGD Region 1 (North Country), Lancaster  
E-mail: [reg1@wildlife.nh.gov](mailto:reg1@wildlife.nh.gov) Phone: 603-788-3164

## DEVILS WASHBOWL Odell

**FISHERY:** Coldwater **ACRES:** 6

**TROPIC LEVEL:**

**AVG. DEPTH:** 0 **MAX. DEPTH:** 0


**SPECIES:** EBT


**ADDITIONAL INFO:** trout pond

**ACCESS:** remote walk-in

Please contact NH Dept of Safety, Marine Patrol for info. on water body/boat/motor restrictions: (603) 293-2037 [www.nh.gov/safety](http://www.nh.gov/safety)

### Public Water Access site


 Canoe/cartop

 Shorebank


 Ramp

 Bathymetric contour (feet)


Bathymetry provided by the NH Department of Environmental Services, Watershed Mgt Bureau

 Town boundary

 Primary Route


 Road or Street

 Trail or other

 Stream or Shoreline

 Surface Water


 Wetland

 Conservation or Public land

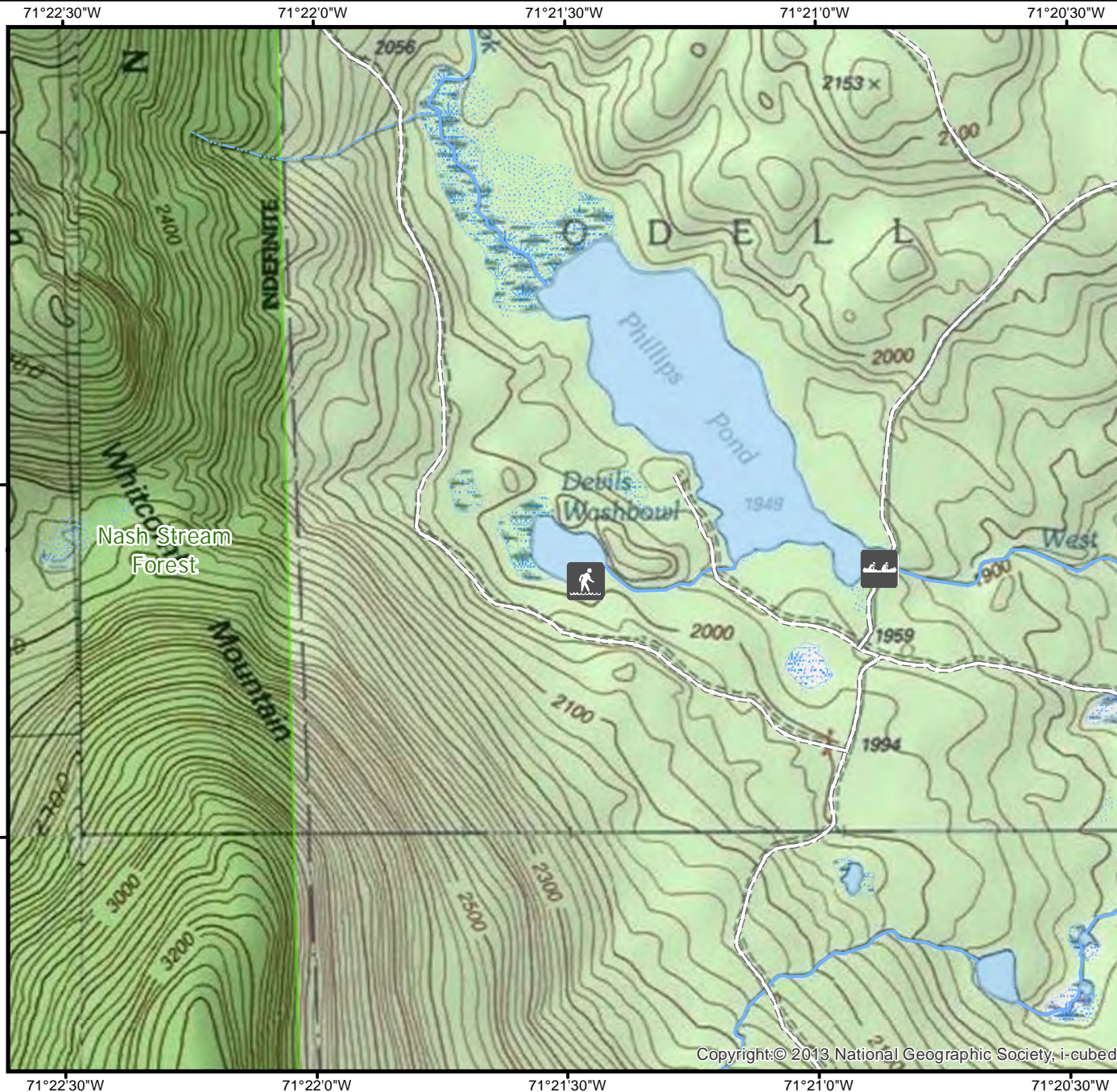
 Cleared Forest

 Contour

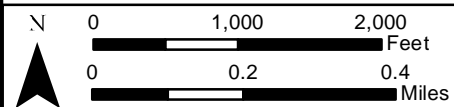
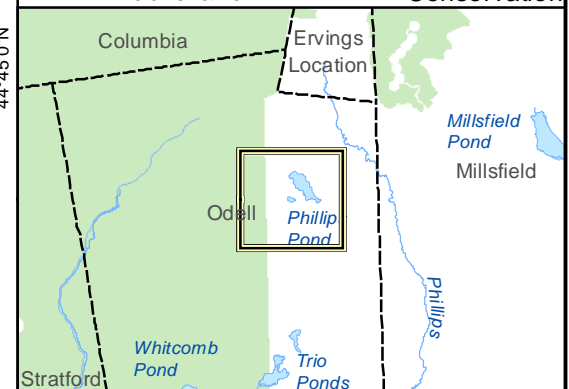
 Building

 Restricted Access Conservation

Source: USGS



Copyright:© 2013 National Geographic Society, i-cubed



Base map data from NH GRANIT at Earth Systems Research Center (UNH) and Open Street Map contributors. UNH, NH Fish & Game and the cooperating agencies make no claim as to the validity or reliability or to any implied uses of these data. NOT INTENDED FOR BOAT NAVIGATION.

**Directions:** seasonal road, gated