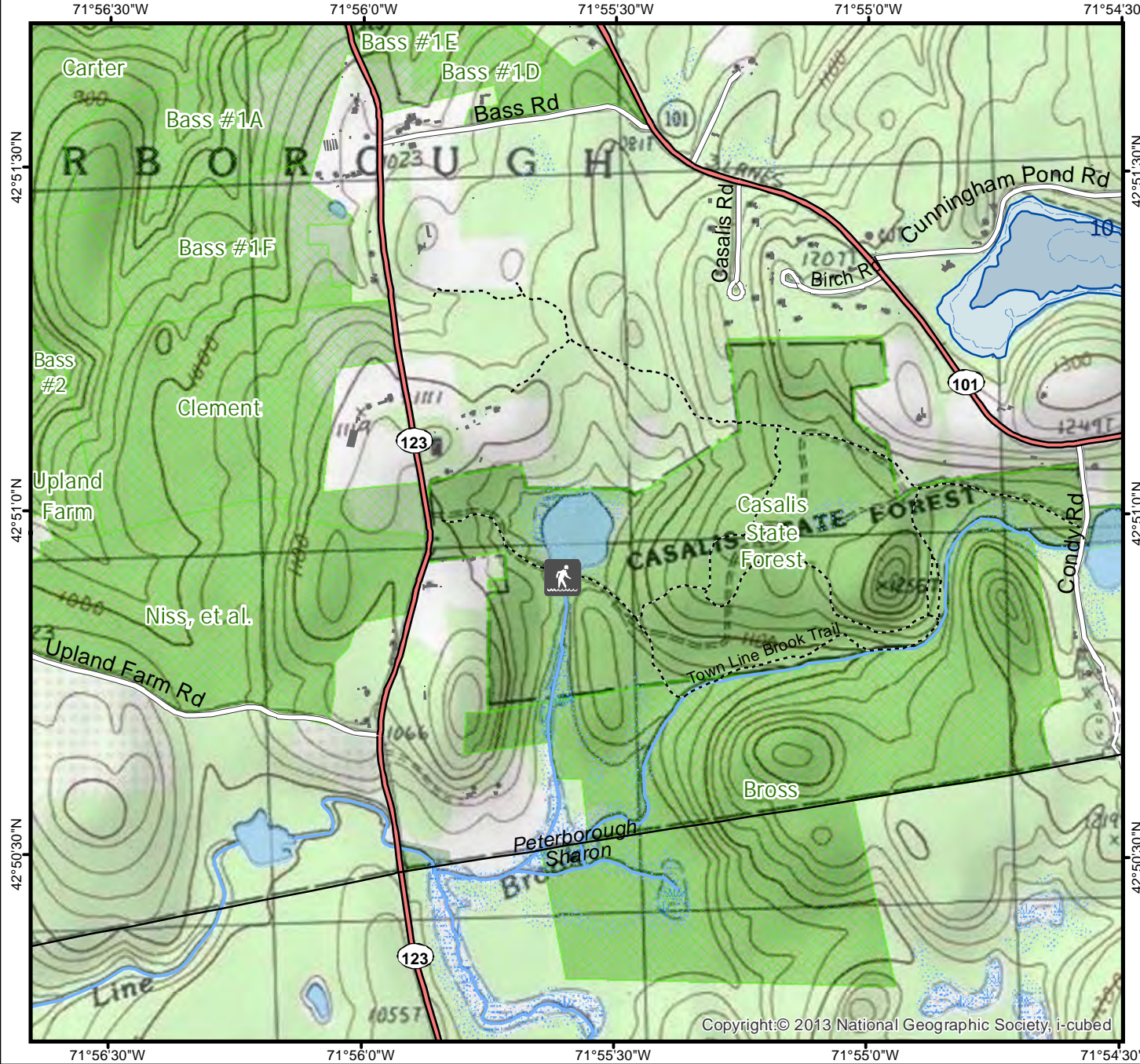


For fishing regulation information, please refer to the NHFGD Freshwater Fishing Digest.

Contact: NHFGD Region 4 (Southwest NH), Keene
E-mail: reg4@wildlife.nh.gov Phone: 603-352-9669

Casalis Marsh Peterborough



FISHERY: ACRES: **8**

TROPIC LEVEL:

AVG. DEPTH: 0 MAX. DEPTH: 0

SPECIES: EBT

ADDITIONAL INFO:

ACCESS:

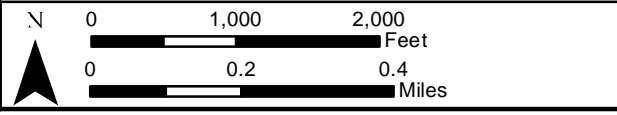
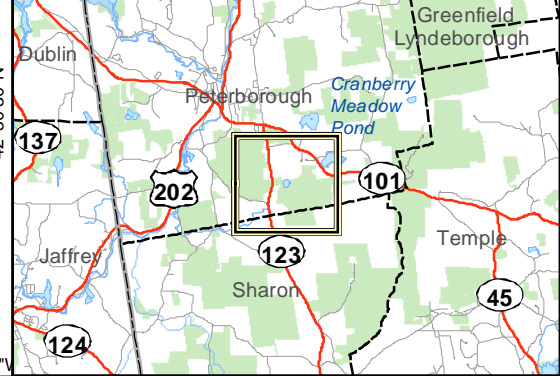
Please contact NH Dept of Safety, Marine Patrol for info. on water body/boat/motor restrictions: (603) 293-2037 www.nh.gov/safety

Public Water Access site

- Canoe/cartop
- Shorebank
- Ramp

- Bathymetric contour (feet)
- Bathymetry provided by the NH Department of Environmental Services, Watershed Mgt Bureau

- | | |
|-----------------------------|--------------------------------|
| Town boundary | Cleared |
| Primary Route | Forest |
| Road or Street | Contour |
| Trail or other | Building |
| Stream or Shoreline | <i>Source: USGS</i> |
| Surface Water | |
| Wetland | |
| Conservation or Public land | Restricted Access Conservation |



Base map data from NH GRANIT at Earth Systems Research Center (UNH) and Open Street Map contributors. UNH, NH Fish & Game and the cooperating agencies make no claim as to the validity or reliability or to any implied uses of these data. NOT INTENDED FOR BOAT NAVIGATION.

Directions: