

For fishing regulation information, please refer to the NHFGD Freshwater Fishing Digest.

Contact: NHFGD Region 2 (Lakes Region), New Hampton
E-mail: reg2@wildlife.nh.gov Phone: 603-744-5470

BEAR POND Center Harbor

FISHERY: ACRES: 13

TROPIC LEVEL: EUTRO

AVG. DEPTH: 10 **MAX. DEPTH:** 30

SPECIES:

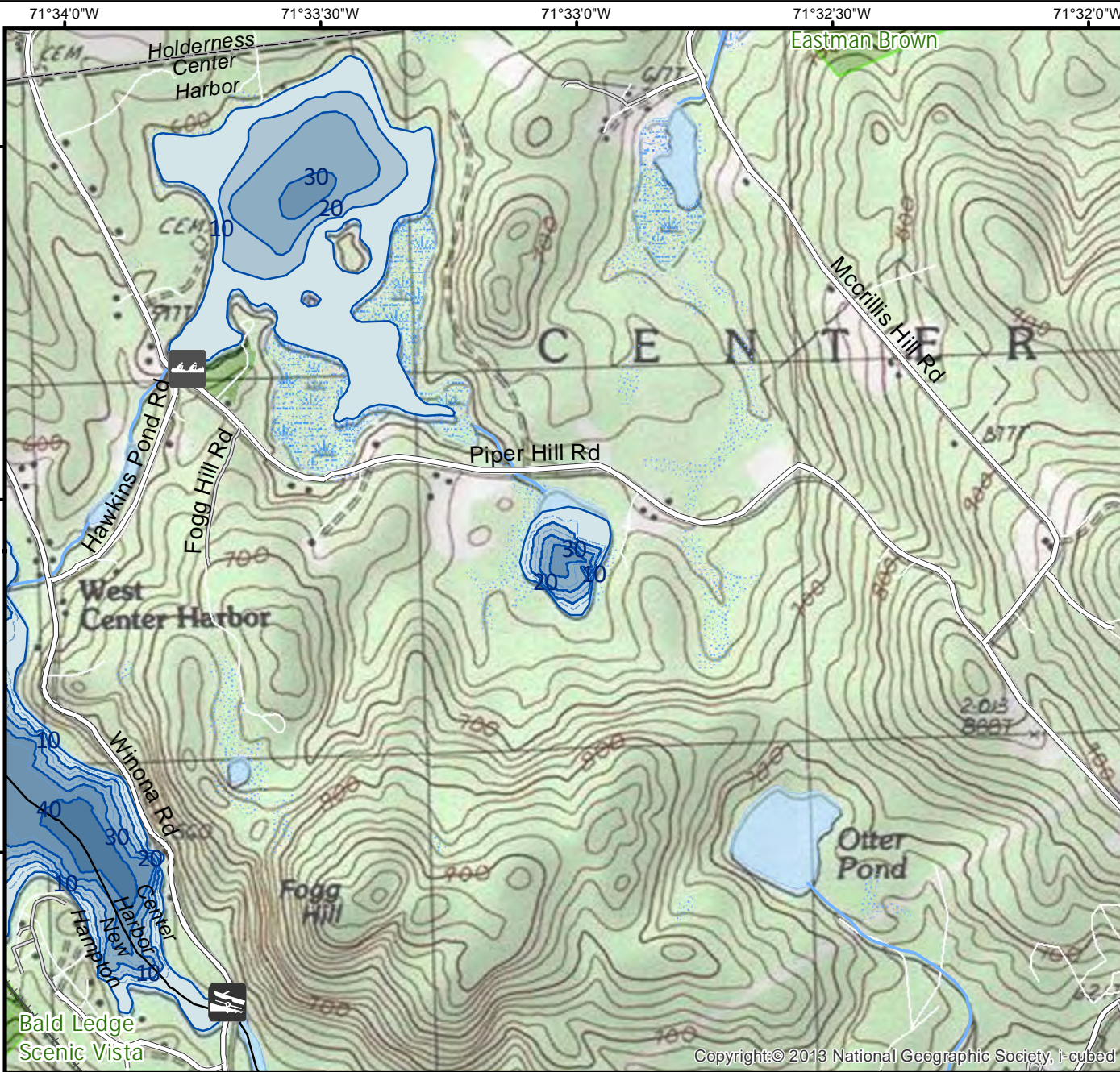
ADDITIONAL INFO:

ACCESS: No public boat access

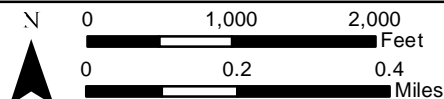
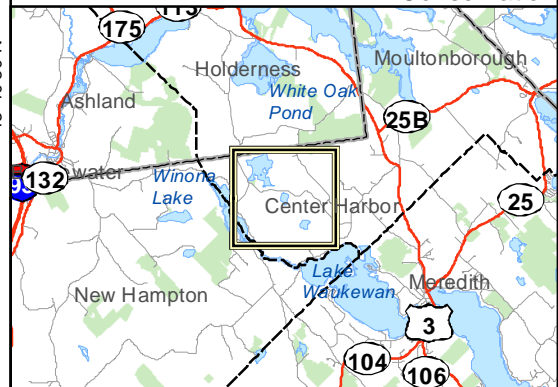
Please contact NH Dept of Safety, Marine Patrol for info. on water body/boat/motor restrictions: (603) 293-2037 www.nh.gov/safety

Public Water Access site

- Canoe/cartop
 - Shorebank
 - Ramp
 - Bathymetric contour (feet)
- Bathymetry provided by the NH Department of Environmental Services, Watershed Mgt Bureau
- Town boundary
 - Primary Route
 - Road or Street
 - Trail or other
 - Stream or Shoreline
 - Surface Water
 - Wetland
 - Conservation or Public land
- Cleared
 - Forest
 - Contour
 - Building
 - Restricted Access Conservation
- Source: USGS



Copyright:© 2013 National Geographic Society, i-cubed



Base map data from NH GRANIT at Earth Systems Research Center (UNH) and Open Street Map contributors. UNH, NH Fish & Game and the cooperating agencies make no claim as to the validity or reliability or to any implied uses of these data. NOT INTENDED FOR BOAT NAVIGATION.

Directions: