

For fishing regulation information, please refer to the NHFGD Freshwater Fishing Digest.

Contact: NHFGD Region 1 (North Country), Lancaster
E-mail: reg1@wildlife.nh.gov Phone: 603-788-3164

BACK POND Stewartstown

FISHERY: Warmwater **ACRES:** 26

TROPIC LEVEL:

AVG. DEPTH: 0 **MAX. DEPTH:** 0


SPECIES: ECP,YP

ADDITIONAL INFO:

ACCESS: gravel ramp

Please contact NH Dept of Safety, Marine Patrol for info. on water body/boat/motor restrictions: (603) 293-2037 www.nh.gov/safety

Public Water Access site

 Canoe/cartop


 Shorebank

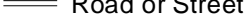
 Ramp

 Bathymetric contour (feet)

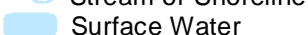
Bathymetry provided by the NH Department of Environmental Services, Watershed Mgt Bureau

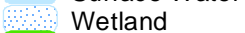
 Town boundary

 Primary Route


 Road or Street

 Trail or other

 Stream or Shoreline

 Surface Water


 Wetland

 Conservation or Public land

 Cleared

 Forest

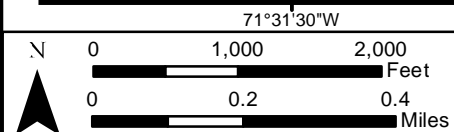
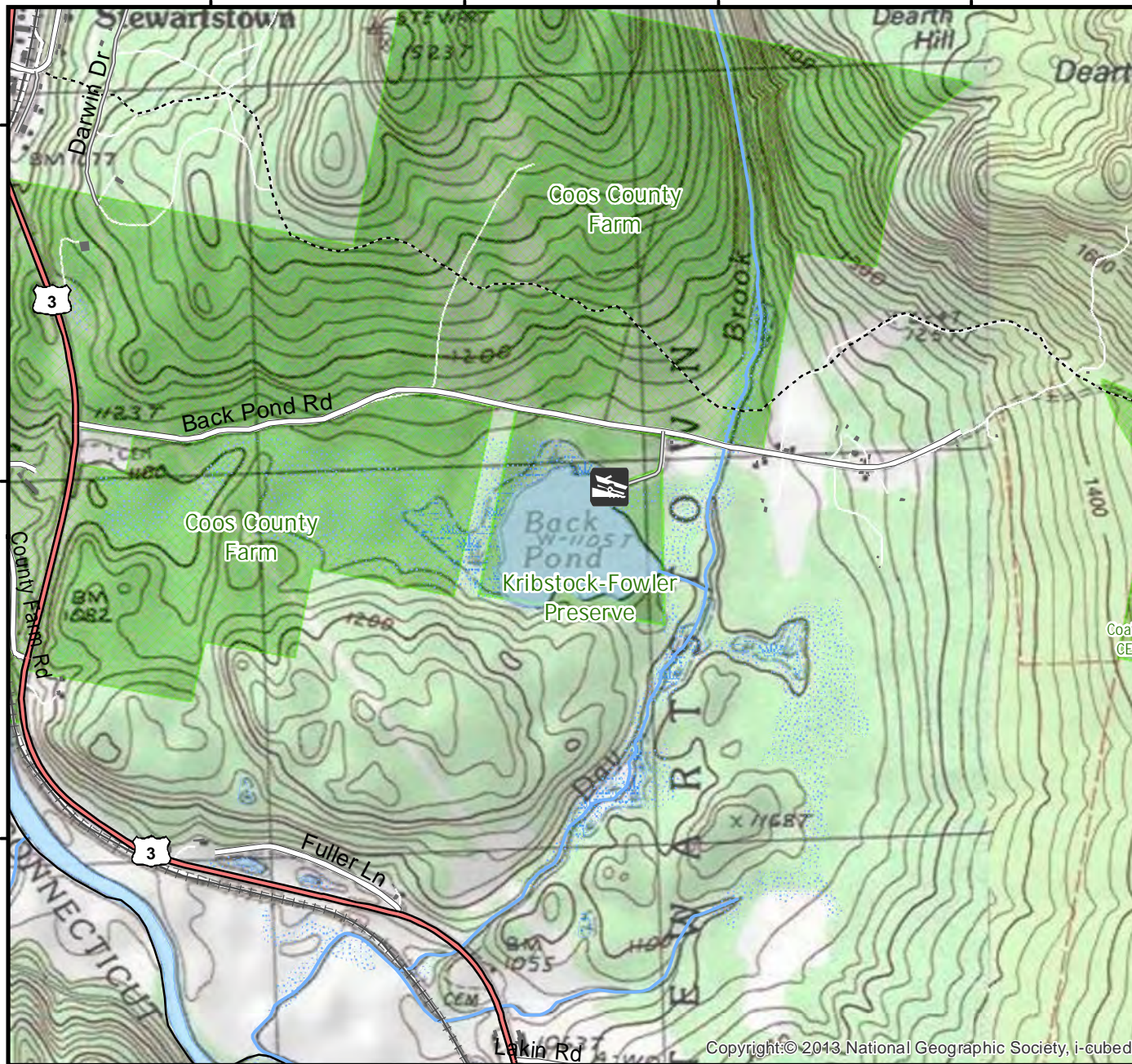
 Contour

 Building

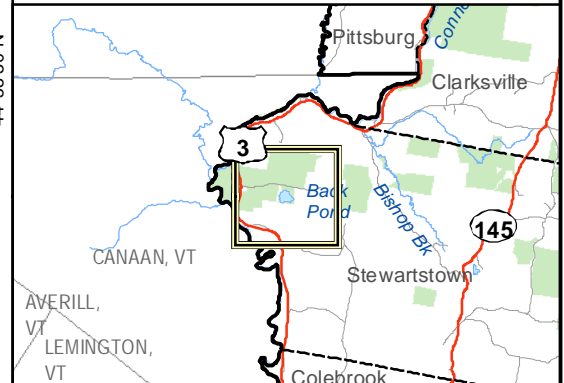
Source: USGS

 Restricted Access

 Conservation



Base map data from NH GRANIT at Earth Systems Research Center (UNH) and Open Street Map contributors. UNH, NH Fish & Game and the cooperating agencies make no claim as to the validity or reliability or to any implied uses of these data. NOT INTENDED FOR BOAT NAVIGATION.



Directions: Rt 3 to Back Pond Rd, 1 mi