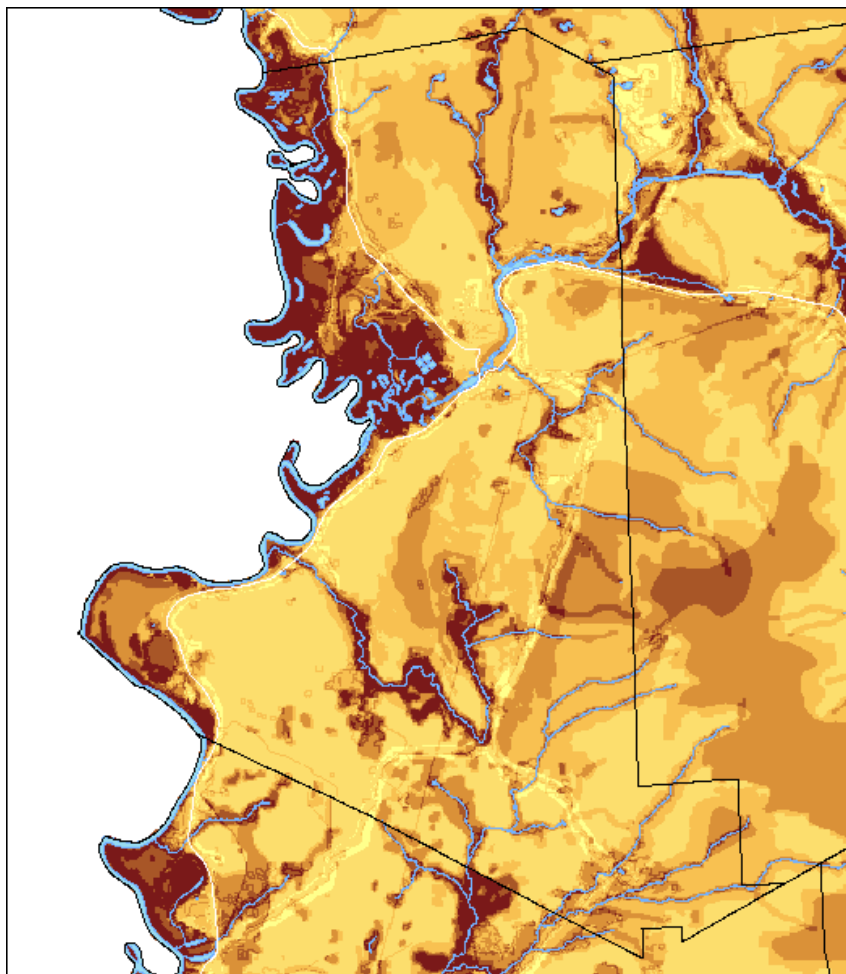


“Picking Our Battles”: An Invasive Plant Control Strategy for Northumberland, NH

A town and landscape scale community collaboration to help restore the native biodiversity of New Hampshire.



PRIORITY AREAS FOR INVASIVE PLANT MANAGEMENT



The dark areas are “hot spots” for invasive plant control. The darker the area, the more likely management will both prevent invasive plant spread to new areas and protect critically sensitive natural resources.

MOST WANTED

INVASIVE PLANT SPECIES IN NORTHUMBERLAND

These species of invasive plant have not yet fully taken root in Northumberland. This means they are the easiest battles to fight. Early detection and rapid response to control small populations of these species might prevent them from becoming fully established in your municipality.

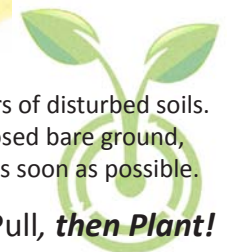
- Autumn olive
(*Elaeagnus umbellata*)
- Japanese barberry
(*Berberis thunbergii*)
- Norway maple
(*Acer platanoides*)

No one knows your municipality like you. If you would like to suggest updates to this list, please contact douglas.cygan@agr.nh.gov

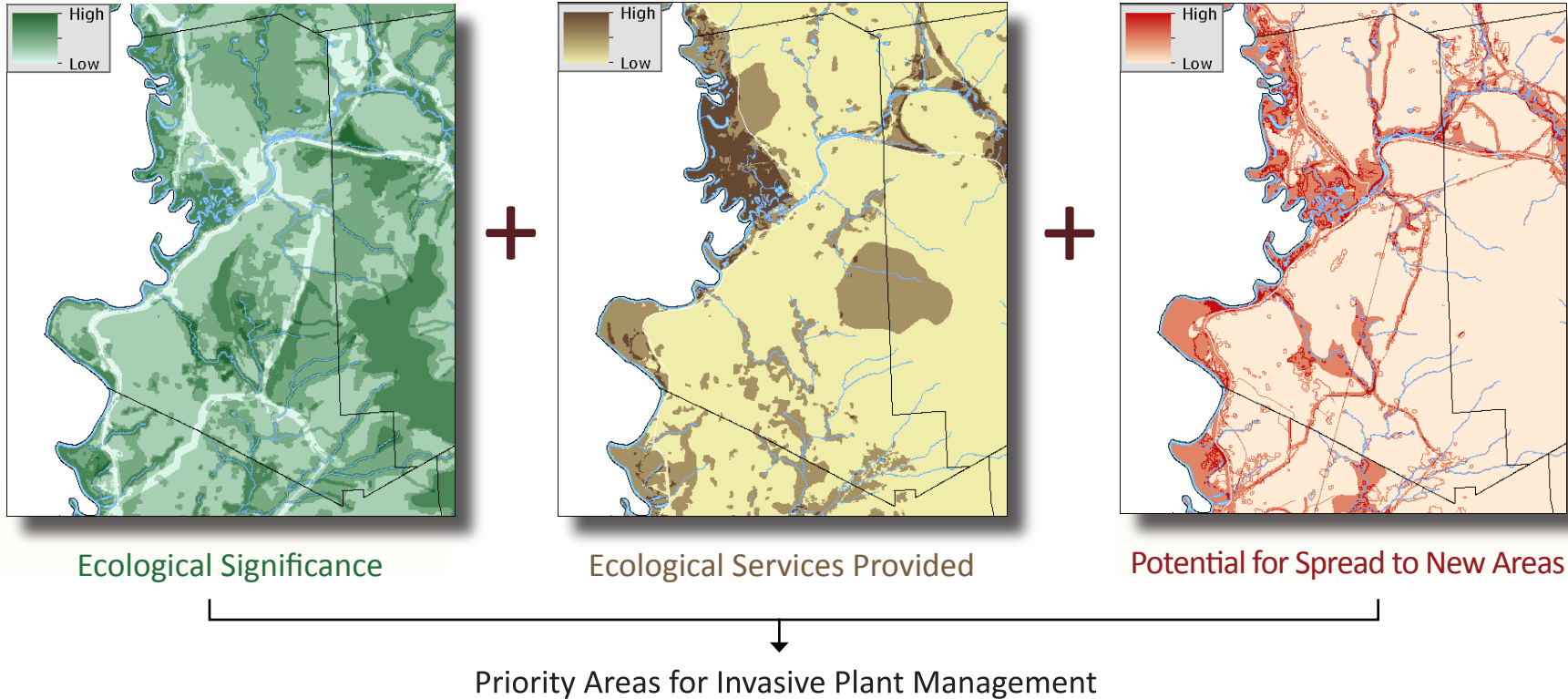
Restoration is a Full Circle ...

Invasive plant species are early colonizers of disturbed soils. Once you have cleared an area and exposed bare ground, remember to plant with native species as soon as possible.

... Pull, **then Plant!**



HOW "HOT SPOTS" FOR INVASIVE PLANT CONTROL WERE IDENTIFIED:



The model on the previous page was created from three composite layers. These layers represent areas of high ecological significance, areas that provide ecological services to human activities, and areas that, if invasive plants are present, have a high risk of spreading to establish new populations. The model supports a landscape scale prioritization strategy customized for your municipality. More details about the strategy, and suggestions of how to prioritize restoration at the individual property scale, can be found at www.wildnh.com/invasives.

FOR MORE INFORMATION ABOUT UPLAND AND WETLAND INVASIVE PLANTS



Contact your UNH Cooperative Extension County Forester at 629A Main Street, Lancaster, NH 03584. Phone: (603) 788-4961



Check out the "New Hampshire Guide to Upland Invasive Species". NH Dept. of Agriculture Markets and Food, Plant Industry Division. 2nd Edition, 2010 available at www.nh.gov/agric/divisions/plant_industry/documents/invasive-species.pdf

This model was created with input from over 120 individuals, community groups, academics and natural resource professionals. The project was coordinated by the NH Fish and Game Department, NH Natural Heritage Bureau, and Great Bay National Estuarine Research Reserve.

