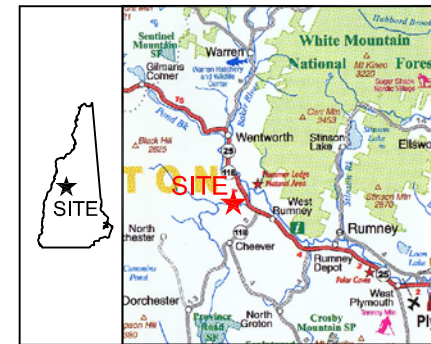
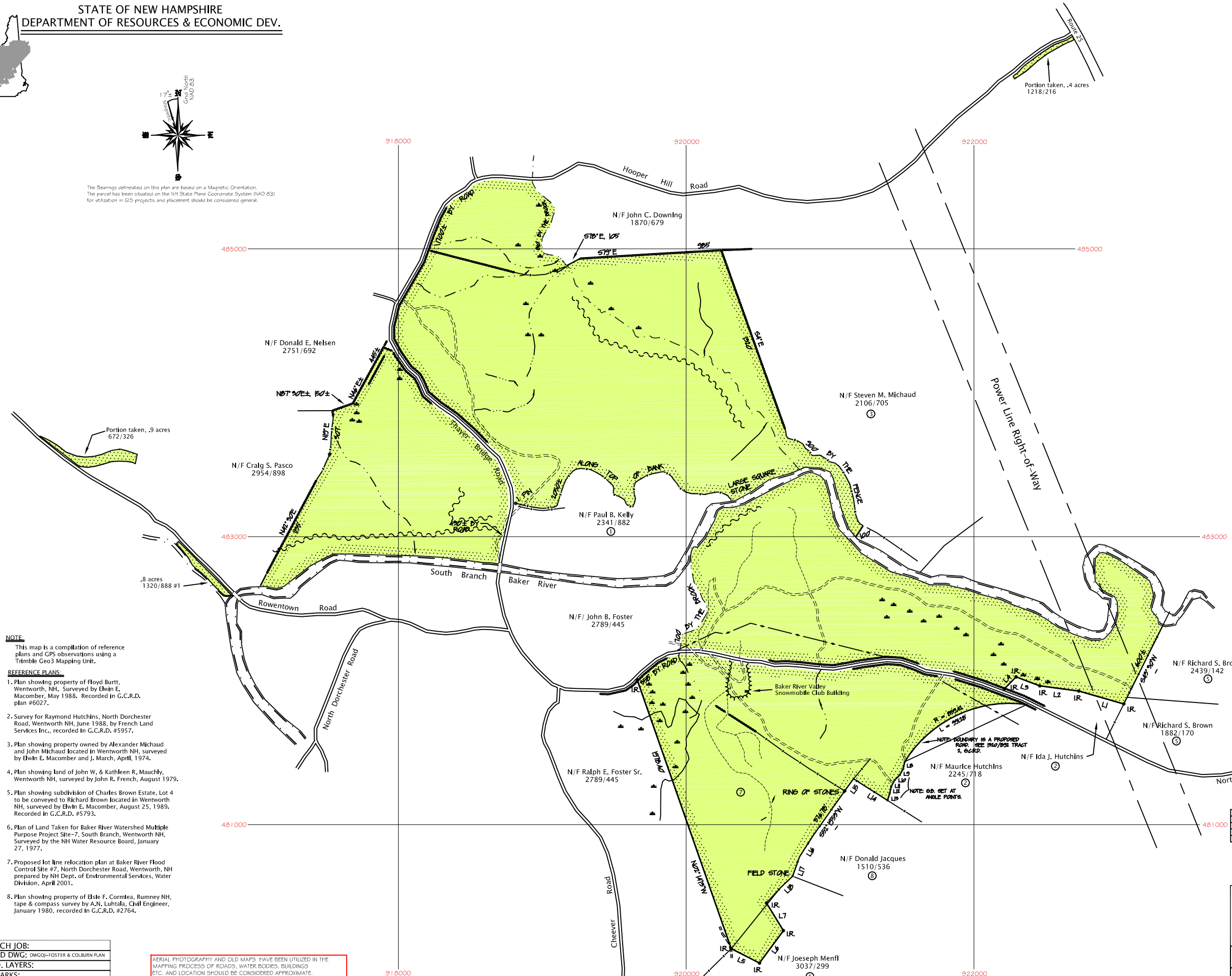


The Bearings delineated on this plan are based on a Magnetic Orientation.
The parcel has been situated on the NH State Plane Coordinate System (NAD 83)
for utilization in GIS projects and placement should be considered general.



LOCATION SKETCH
SOURCE NH HIGHWAY MAP - NH DTTD



No.	Bearing	Distance
L1	N54°54'21"W	214.94
L2	N65°21'50"W	179.67
L3	N62°10'19"W	176.56
L4	S41°23'55"W	116.00
L5	S46°00'E	130.0
L6	N59°30'E	180.0
L7	N14°30'W	135.0
L8	S19°00'W	50.0
L9	S46°00'W	50.0
L10	S47°00'W	50.0
L11	S45°00'W	50.0
L12	S50°00'W	50.0
L13	S51°30'W	50.0
L14	N40°30'W	18.0
L15	S59°1'W	109.5
L16	S49°52'11"W	178.56
L17	S56°34'55"W	141.84
L18	S69°24'57"W	121.11

LEGEND:

Stone wall	— — — — —
Wire fence	— — — — —
Road	— — — — —
Stream	— — — — —
Power Line	— — — — —
Woods Road	— — — — —
Trail	— — — — —
Wet Area	— — — — —
Tree line	— — — — —
Referenced Plan No.	①
Property	— — — — —

NOTE:
This map is a compilation of reference plans and GPS observations using a Trimble Geo3 Mapping Unit.

REFERENCE PLANS:

1. Plan showing property of Floyd Burt, Wentworth, NH, Surveyed by Edwin E. Macomber, May 1988. Recorded in G.C.R.D. plan #6027.
2. Survey for Raymond Hutchins, North Dorchester Road, Wentworth NH, June 1988, by French Land Services Inc., recorded in G.C.R.D. #5957.
3. Plan showing property owned by Alexander Michaud and John Michaud located in Wentworth NH, surveyed by Edwin E. Macomber and J. March, April, 1974.
4. Plan showing land of John W. & Kathleen R. Mauchly, Wentworth NH, surveyed by John R. French, August 1979.
5. Plan showing subdivision of Charles Brown Estate, Lot 4 to be conveyed to Richard Brown located in Wentworth NH, surveyed by Edwin E. Macomber, August 25, 1989. Recorded in G.C.R.D. #5793.
6. Plan of Land Taken for Baker River Watershed Multiple Purpose Project Site-7, South Branch, Wentworth NH, Surveyed by the NH Water Resource Board, January 27, 1977.
7. Proposed lot line relocation plan at Baker River Flood Control Site #7, North Dorchester Road, Wentworth, NH prepared by NH Dept. of Environmental Services, Water Division, April 2001.
8. Plan showing property of Elsie F. Cormlea, Rumney NH, tape & compass survey by A.N. Luhtala, Civil Engineer, January 1980, recorded in G.C.R.D. #2764.

BENCH JOB:
ACAD DWG: DWG01-FOSTER & COLBURN PLAN
ADD. LAYERS:
REMARKS:

AERIAL PHOTOGRAPHY AND OLD MAPS HAVE BEEN UTILIZED IN THE MAPPING PROCESS OF ROADS, WATER BODIES, BUILDINGS ETC. AND LOCATION SHOULD BE CONSIDERED APPROXIMATE.

DATE	DESCRIPTION	BY
6/29/09	Foster & Colburn map transformed to NAD-83 State Plane	OJ

REVISIONS

Division of Forests & Lands

FOSTER & COLBURN STATE FOREST

Wentworth, New Hampshire

SCALE: 1" = 300'

DATE: September 2004
AREA = 240± Acres

SURVEYED BY: See notes