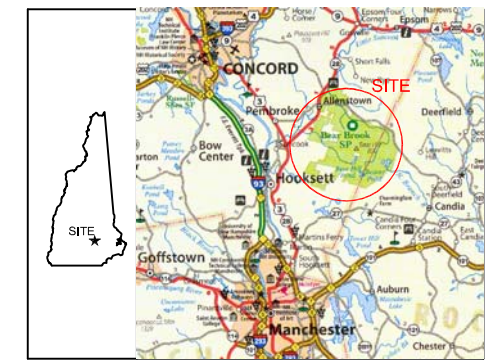
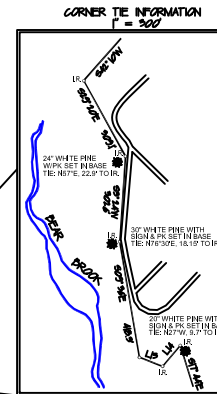


The Bearings delineated on this plan are based on a Magnetic Orientation.
The parcel has been situated on the NH State Plane Coordinate System (NAD 83)
for utilization in GIS projects and placement should be considered general.

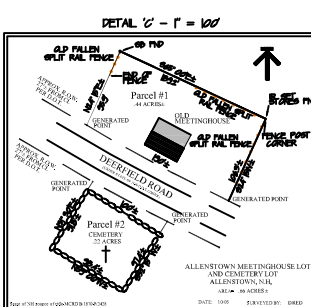
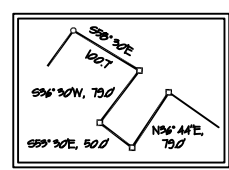
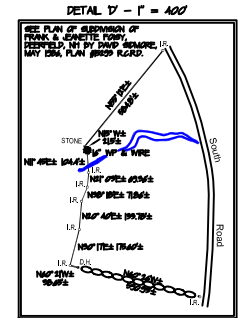
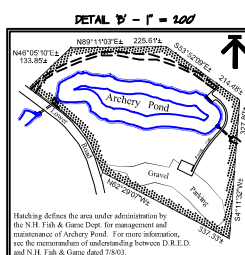
FOR INFORMATION ON THE FEMORKE WATER WORKS WELLS SEE EASEMENT AGREEMENT IN BK. 189 PG. 10, M.G.R.D. AND THE WATER WELL EASEMENT AND MANAGEMENT AGREEMENT BETWEEN DREP. AND THE FEMORKE WATER WORKS DATED AUGUST 1, 2000.

INFORMATION REGARD HOUSE LOT
N/E SHANNON GROVES D/228 P/1845

1. NHP 00012L 1440'S
 2. NHP 00012L 1440'S
 3. NHP 00012L 1440'S
 4. NHP 00012L 1440'S
 5. NHP 00012L 1440'S
 6. NHP 00012L 1440'S
- SEE PROPOSED LOT LINE ADJUSTMENT PLAN BETWEEN TOWN MAP 400-405 STATE OF NH, DEED BEAR BROOK STATE PARK AND TOWN MAP 407-408, SHANNON AND MARA BROWER, ALLENSTOWN NH.



LOCATION SKETCH
SOURCE: NH HIGHWAY MAP - NH DTD



Lot	Bearing	Distance	Lot	Bearing	Distance
L1	S47° 14' E	17.14	L14	S78° 47' W	89.47
L2	S47° 14' E	17.14	L15	S78° 47' W	89.47
L3	S47° 14' E	17.14	L16	S78° 47' W	89.47
L4	S47° 14' E	17.14	L17	S78° 47' W	89.47
L5	S47° 14' E	17.14	L18	S78° 47' W	89.47
L6	S47° 14' E	17.14	L19	S78° 47' W	89.47
L7	S47° 14' E	17.14	L20	S78° 47' W	89.47
L8	S47° 14' E	17.14	L21	S78° 47' W	89.47
L9	S47° 14' E	17.14	L22	S78° 47' W	89.47
L10	S47° 14' E	17.14	L23	S78° 47' W	89.47
L11	S47° 14' E	17.14	L24	S78° 47' W	89.47
L12	S47° 14' E	17.14	L25	S78° 47' W	89.47
L13	S47° 14' E	17.14	L26	S78° 47' W	89.47
L14	S47° 14' E	17.14	L27	S78° 47' W	89.47
L15	S47° 14' E	17.14	L28	S78° 47' W	89.47
L16	S47° 14' E	17.14	L29	S78° 47' W	89.47
L17	S47° 14' E	17.14	L30	S78° 47' W	89.47
L18	S47° 14' E	17.14	L31	S78° 47' W	89.47
L19	S47° 14' E	17.14	L32	S78° 47' W	89.47
L20	S47° 14' E	17.14	L33	S78° 47' W	89.47
L21	S47° 14' E	17.14	L34	S78° 47' W	89.47
L22	S47° 14' E	17.14	L35	S78° 47' W	89.47
L23	S47° 14' E	17.14	L36	S78° 47' W	89.47
L24	S47° 14' E	17.14	L37	S78° 47' W	89.47
L25	S47° 14' E	17.14	L38	S78° 47' W	89.47
L26	S47° 14' E	17.14	L39	S78° 47' W	89.47
L27	S47° 14' E	17.14	L40	S78° 47' W	89.47
L28	S47° 14' E	17.14	L41	S78° 47' W	89.47
L29	S47° 14' E	17.14	L42	S78° 47' W	89.47
L30	S47° 14' E	17.14	L43	S78° 47' W	89.47
L31	S47° 14' E	17.14	L44	S78° 47' W	89.47
L32	S47° 14' E	17.14	L45	S78° 47' W	89.47
L33	S47° 14' E	17.14	L46	S78° 47' W	89.47
L34	S47° 14' E	17.14	L47	S78° 47' W	89.47
L35	S47° 14' E	17.14	L48	S78° 47' W	89.47
L36	S47° 14' E	17.14	L49	S78° 47' W	89.47
L37	S47° 14' E	17.14	L50	S78° 47' W	89.47
L38	S47° 14' E	17.14	L51	S78° 47' W	89.47
L39	S47° 14' E	17.14	L52	S78° 47' W	89.47
L40	S47° 14' E	17.14	L53	S78° 47' W	89.47
L41	S47° 14' E	17.14	L54	S78° 47' W	89.47
L42	S47° 14' E	17.14	L55	S78° 47' W	89.47
L43	S47° 14' E	17.14	L56	S78° 47' W	89.47
L44	S47° 14' E	17.14	L57	S78° 47' W	89.47
L45	S47° 14' E	17.14	L58	S78° 47' W	89.47
L46	S47° 14' E	17.14	L59	S78° 47' W	89.47
L47	S47° 14' E	17.14	L60	S78° 47' W	89.47
L48	S47° 14' E	17.14	L61	S78° 47' W	89.47
L49	S47° 14' E	17.14	L62	S78° 47' W	89.47
L50	S47° 14' E	17.14	L63	S78° 47' W	89.47
L51	S47° 14' E	17.14	L64	S78° 47' W	89.47
L52	S47° 14' E	17.14	L65	S78° 47' W	89.47
L53	S47° 14' E	17.14	L66	S78° 47' W	89.47
L54	S47° 14' E	17.14	L67	S78° 47' W	89.47
L55	S47° 14' E	17.14	L68	S78° 47' W	89.47
L56	S47° 14' E	17.14	L69	S78° 47' W	89.47
L57	S47° 14' E	17.14	L70	S78° 47' W	89.47
L58	S47° 14' E	17.14	L71	S78° 47' W	89.47
L59	S47° 14' E	17.14	L72	S78° 47' W	89.47
L60	S47° 14' E	17.14	L73	S78° 47' W	89.47
L61	S47° 14' E	17.14	L74	S78° 47' W	89.47
L62	S47° 14' E	17.14	L75	S78° 47' W	89.47
L63	S47° 14' E	17.14	L76	S78° 47' W	89.47
L64	S47° 14' E	17.14	L77	S78° 47' W	89.47
L65	S47° 14' E	17.14	L78	S78° 47' W	89.47
L66	S47° 14' E	17.14	L79	S78° 47' W	89.47
L67	S47° 14' E	17.14	L80	S78° 47' W	89.47
L68	S47° 14' E	17.14	L81	S78° 47' W	89.47
L69	S47° 14' E	17.14	L82	S78° 47' W	89.47
L70	S47° 14' E	17.14	L83	S78° 47' W	89.47
L71	S47° 14' E	17.14	L84	S78° 47' W	89.47
L72	S47° 14' E	17.14	L85	S78° 47' W	89.47
L73	S47° 14' E	17.14	L86	S78° 47' W	89.47
L74	S47° 14' E	17.14	L87	S78° 47' W	89.47
L75	S47° 14' E	17.14	L88	S78° 47' W	89.47
L76	S47° 14' E	17.14	L89	S78° 47' W	89.47
L77	S47° 14' E	17.14	L90	S78° 47' W	89.47
L78	S47° 14' E	17.14	L91	S78° 47' W	89.47
L79	S47° 14' E	17.14	L92	S78° 47' W	89.47
L80	S47° 14' E	17.14	L93	S78° 47' W	89.47
L81	S47° 14' E	17.14	L94	S78° 47' W	89.47
L82	S47° 14' E	17.14	L95	S78° 47' W	89.47
L83	S47° 14' E	17.14	L96	S78° 47' W	89.47
L84	S47° 14' E	17.14	L97	S78° 47' W	89.47
L85	S47° 14' E	17.14	L98	S78° 47' W	89.47
L86	S47° 14' E	17.14	L99	S78° 47' W	89.47
L87	S47° 14' E	17.14	L100	S78° 47' W	89.47

Date	Description	By
5/2013	Acres revisions	
10/2012	Deed lines added (DEED SKETCH LAYER)	CJ
5/2012	Revised property lines around Groves lot & lines around Detail 'D'	CJ
2/2012	Bear Brook S.P. map transformed to NAD-83 State Plane	CJ

BEAR BROOK STATE PARK
Allenstown, Deerfield, Candia, Hooksett

SCALE: 1" = 1500'
DATE: May 2001, REV: 6/2011
AREA: 9976± Acres
SURVEYED BY: See note

BENCH JOB:
ACAD DWG: DWG01 - BEARBROOK-PM
ADD LAYERS:
REMARKS:

NOTE:
SEE PLAN OF BEAR BROOK STATE PARK
DRAWN BY PAUL HODKINS, 1986, AND
REVISION 1996.
SOME INTERIOR DETAIL AND ROADS SHOWN ARE
FROM 2010 COLOR AERIAL PHOTOGRAPHY FROM
LINT GRANIT, AND FROM THE BEAR BROOK STAND
TYPE MAPS DONE BY THE DIV. OF FORESTS &
LANDS, DATED JULY 24, 1991.
REVISION TO GROVES HOUSE LOT MADE 6/2011
ACRES BREAKDOWN BY TOWN
ALLENSTOWN: 4717 ACRES±
DEERFIELD: 266 ACRES±
HOOKSETT: 204 ACRES±
CANDIA: 299 ACRES±